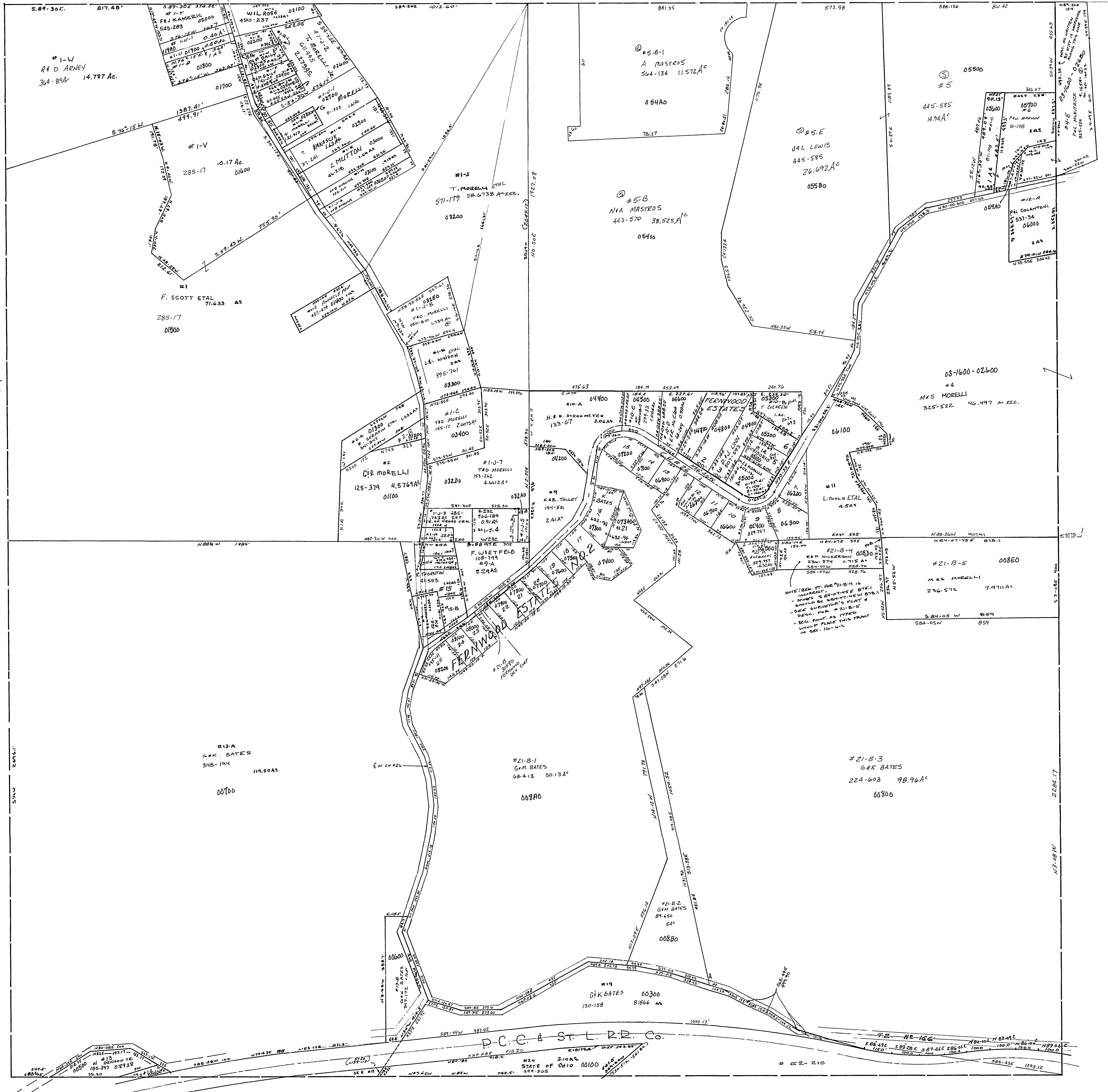


- #7-A J.P. BROWN 81-125 0.144<sup>±</sup>
- #15-A K.C. SANDERSON 32-141 0.288<sup>±</sup>
- #15-B J.A.K. FELIX 570-640 0.40<sup>±</sup>
- #7-A J. BROWN 453-724 0.14<sup>±</sup>
- #1-J-3 CROSS CR. TWP. TR. 485-257 0.743<sup>±</sup>
- #1-12 J. BAKER 192-244 0.366<sup>±</sup>
- #1-J-5 F. WILTFIELD 109-799 0.19<sup>±</sup>
- #1-4 D.R. DAVIS 588-763 0.633<sup>±</sup>
- #1-U " " " 17-44 1.00<sup>±</sup>
- #1-U " " " " 0.40<sup>±</sup>
- #8 B. TERAMANA SR 602-510 0.474<sup>±</sup>

FERNWOOD EST. SUB DIVS.

- 1 R. C. C. DAY 476-634
- 2 R. C. C. DAY 476-634
- 3
- 4
- 5
- 6 T. QUARESS ETAL 267-695
- 7 H. MARAGONI 200-950
- 8 R. D. WILKERSON 503-570
- 9
- 10 PERELMAN REAL 576-373
- 11 J. R. ABDALLA 480-440
- 12 M. B. DANDEA 619-89 100 X 160
- 13 P. F. MILICIA 503-323 100 X 150
- 14 R. T. CHANTINI 71-472
- 15 F. K. COLE 205-404 156.88 X 150 REC.
- 16
- 17 G. BATES ETAL 60-155
- 18 " " " "
- 19 " " " "
- 20 A. MOLESKY JR. 528-623
- 21 G. M. BATES 249-735 100 X 160
- 22 " " " "
- 23 J. V. DELEHARDIS 351-631 100 X 160
- 24
- 25 T. LHEUREAU 380-635 230.5 X 160



#14 W. DENNON TR 185-397 0.1825<sup>±</sup>  
 #2-B R. ALLEN 273-321 0.393<sup>±</sup>

03-2200-

CROSS CREEK TWP  
 SECTION 22, T.6, R.2.  
 SCALE 1" = 200'

