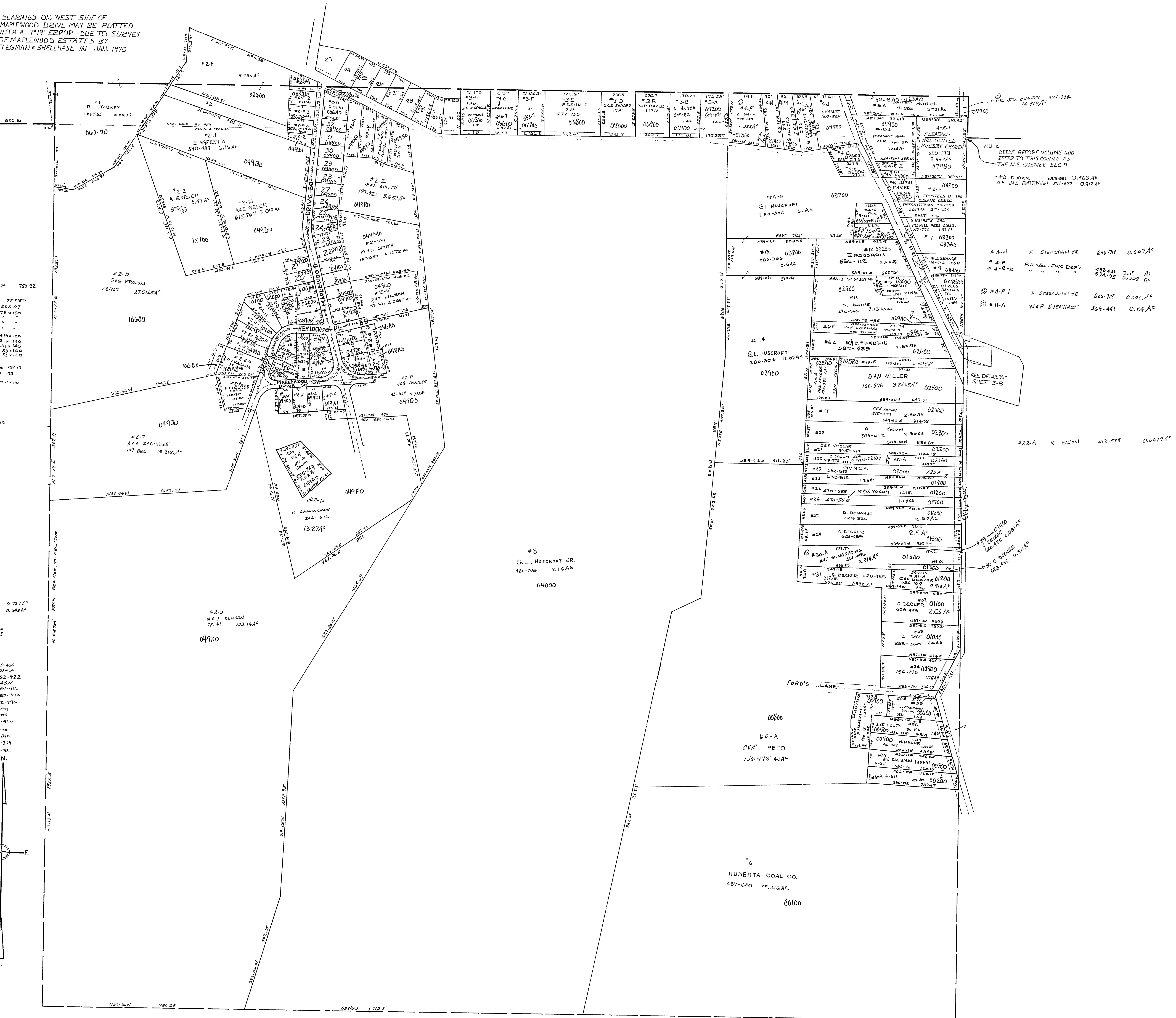


NOTE: BEARINGS ON WEST SIDE OF MAPLEWOOD DRIVE MAY BE PLATTED WITH A 7/16" ERROR DUE TO SURVEY OF MAPLEWOOD ESTATES BY STEGMAN & SHELLHASE IN JAN. 1970



Maplewood Sub-Div.  
 15' E WINDY TR 557-749 75x132  
 6 DFM WILLIAMS 335-101 75x100  
 7 TIT US LANE 648 22x17  
 8 R.A. HILLMAN 359-207 75x150  
 9 GIBB 596-739  
 10 J.E. MOORE 596-739  
 11 J. WILSON 596-739  
 12 J. WILSON 596-739  
 13 F.V. WILSON 596-739  
 14 G.S. CARNE 593-311 144x150  
 15 J. WILSON 596-739  
 16 M. WILSON 596-739  
 17 J. WILSON 596-739  
 18 J. WILSON 596-739  
 19 J. WILSON 596-739  
 20 J. WILSON 596-739

Maplewood Est. #2  
 21 K.E. RUMS 560-871 75x150  
 22 S. ELLIS & T. OODEN 589-585 85x150  
 23  
 24 T.P. MATTHEWS 280-639 65x149  
 25 G.B. CLAWER 562-151 75x150  
 26 J.B. OBERHUTZER 359-565 75x150  
 27 T. HOLTZ 105-623 75x150  
 28 T. HAYLER 326-155  
 29 D.E. ALBAUGH 615-125  
 30 C. BYERS 562-454  
 31 M.B. MOORE 601-360  
 32 MACKIN 481-843

#2-X C. WOLLARD 280-646 0.72 AC  
 #2-N " " 288-646 0.64 AC  
 #2-D-15 D. HARRIS 152-917 0.74 AC  
 #2-D-16 J. TYLE 101-557 0.71 AC  
 #2-D-17 C. SCHURABEL 178-127 0.88 AC  
 #2-C F.D. SMITH 589-128 0.28 AC  
 #2-D C. SCHURABEL 128-127 0.52 AC  
 #2-D R. SCHURABEL 128-127 0.26 AC  
 #2-M Rev. BISHOP 181-247 0.26 AC  
 #2-F-1 J. SYMONS 631-120 0.26 AC  
 #2-F-2 J. SYMONS 631-120 0.26 AC  
 #2-D-1 R.V. KERE 0-116 162-922  
 #2-D-2 C. KIMBLE 0-116 162-922  
 #2-D-3 W.A. PRILLIAGO 0-116 162-922  
 #2-D-4 T. WELLS 0-116 162-922  
 #2-F-3 C. WELLS 0-116 162-922  
 #2-F-4 M. WELLS 0-116 162-922  
 #2-F-5 D. WELLS 0-116 162-922  
 #2-F-6 R. WELLS 0-116 162-922  
 #2-F-7 S. WELLS 0-116 162-922  
 #2-F-8 T. WELLS 0-116 162-922  
 #2-F-9 U. WELLS 0-116 162-922  
 #2-F-10 V. WELLS 0-116 162-922  
 #2-F-11 W. WELLS 0-116 162-922  
 #2-F-12 X. WELLS 0-116 162-922  
 #2-F-13 Y. WELLS 0-116 162-922  
 #2-F-14 Z. WELLS 0-116 162-922

NOTE  
 DEEDS BEFORE VOLUME 600  
 REFER TO THIS COURSE #5  
 THE N.E. CORNER SEC 9  
 #4-D D. KOCK 483-888 0.463 AC  
 A.F. H.L. BATEMAN 377-570 0.912 AC

#4-N K. STEEDMAN TR 606-718 0.607 AC  
 #4-P P.H. V. FIRE DEPT 332-441 0.13 AC  
 #4-R-2 " " " 332-441 0.13 AC  
 #4-P-1 K. STEEDMAN TR 606-718 0.607 AC  
 #4-A W.P. EVERHART 469-441 0.04 AC

#22-A K. ELSON 212-511 0.6619 AC

#20-C D. BEGGE 608-135 0.34 AC

#5  
 G.L. HUSCROFT JR.  
 484-728 2.14 AC  
 04000

#6-A  
 C.R. PETO  
 136-178 4.04 AC

#6  
 HUBERTA COAL CO.  
 487-640 75.016 AC  
 60100

09-0900-

SECTION 9, T.7R.2.  
 ISLAND CREEK TWP.  
 SCALE: 1"=200'  
 MAPLEWOOD ESTATES

