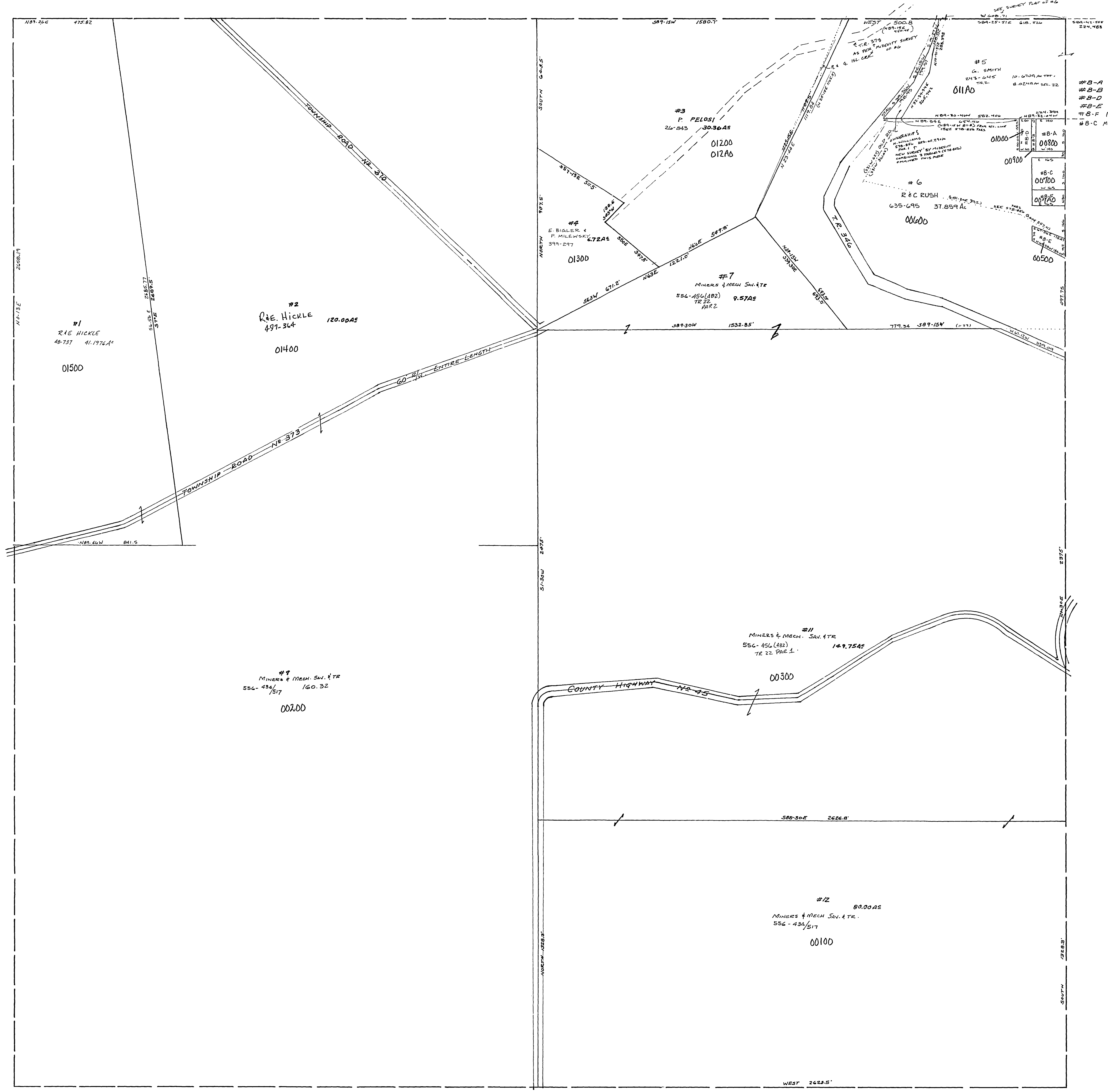


09-2200-



#1	R & E HICKLEY	49-737	41.1972 Ac.
#2	R & E HICKLEY	49-364	120.00 Ac.
#3	P. PELOSI	26-843	30.36 Ac.
#4	E. BIGLIERI & P. MILLEWSKY	37-1-217	4.72 Ac.
#5	G. SMITH	24-2-645	24.64 Ac.
#6	R & C RUSH	635-695	37.859 Ac.
#7	MINERS & MECH. SVC. ETC.	526-456(182)	9.57 Ac.
#8	MINERS & MECH. SVC. ETC.	526-456(182)	14.975 Ac.
#9	MINERS & MECH. SVC. ETC.	526-434(157)	80.00 Ac.
#10	R. ALLEN	413-432	.515 Ac.
#11	R & C RUSH	433-201	.237 Ac.
#12	M. P. KOLOPAJLO	584-246	.314 Ac.
#13	M. P. KOLOPAJLO	584-246	0.503 Ac.
#14	M. P. KOLOPAJLO	584-246	0.600 Ac.

SECTION 22, T.7, R.2.  
ISLAND CREEK TWP.  
SCALE: 1" = 200'

