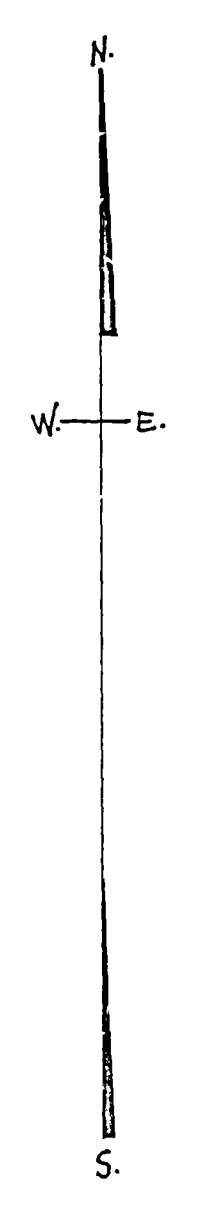
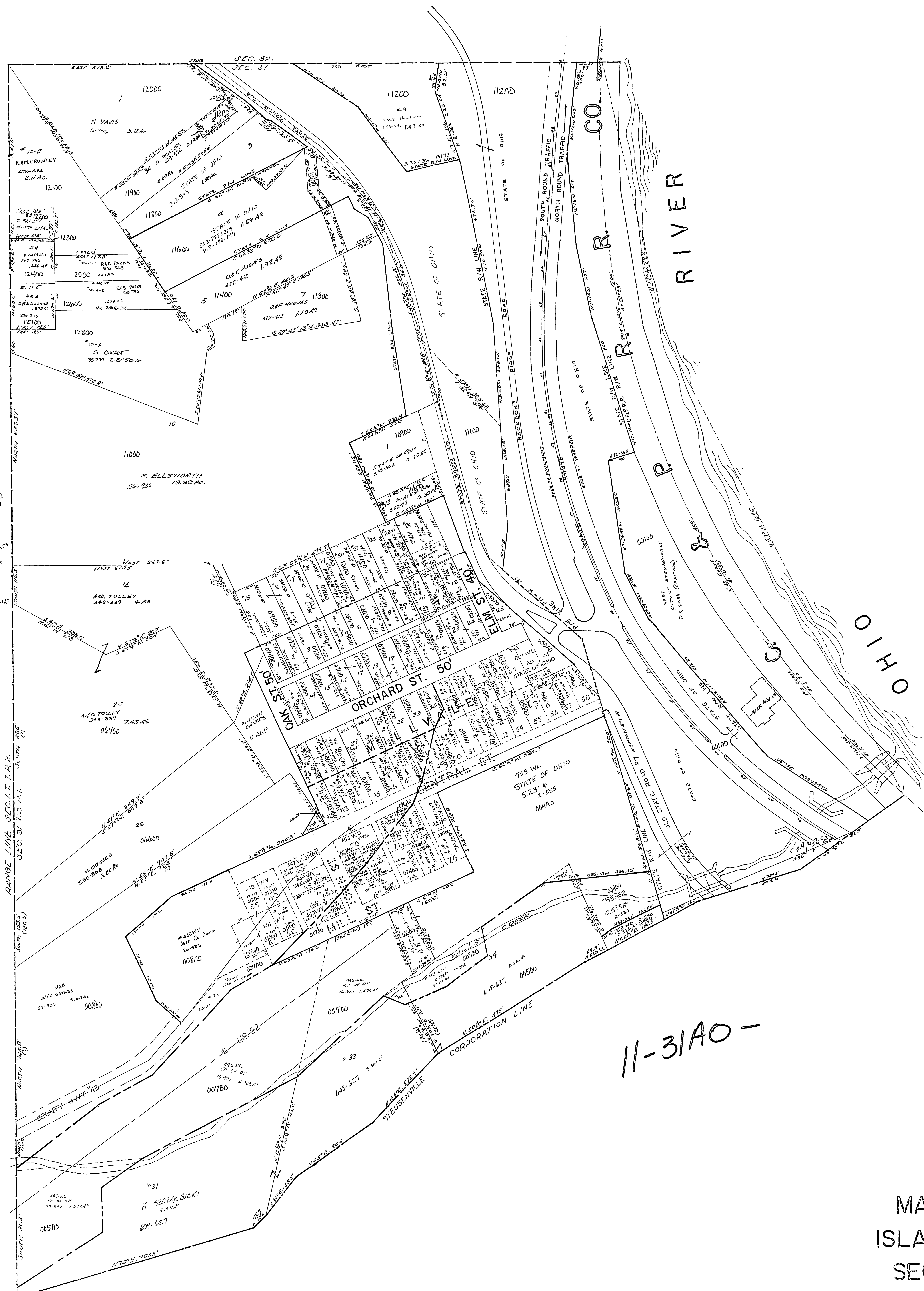


#6 A. PACH ET AL  
44-513 2,435.42

#7 B. DIMS ET AL  
40-95 3,042

#2 NORTHERN DR. 12 AC  
587-336

MILVALE  
A # 58 L. Ba-Hegel 478-543  
A # 69 " " 478-543  
P # 22 JEFF. CO. COMM. 7-878  
P # 33 46TH ST OF OH 34-820  
P # 72 45TH ST OF OH 34-817  
P # 73 45TH ST OF OH 34-817  
P # 1041 H.B. BRESSLER 402-79 3,410.04  
P # 1112 A. BATTISTEL 187-100  
CROSSING HAS BEEN CORRECTED WITH REFERENCE TO



MAP OF ALIKANNA  
ISLAND CREEK TWP.  
SEC 31.T.3.R.1.

