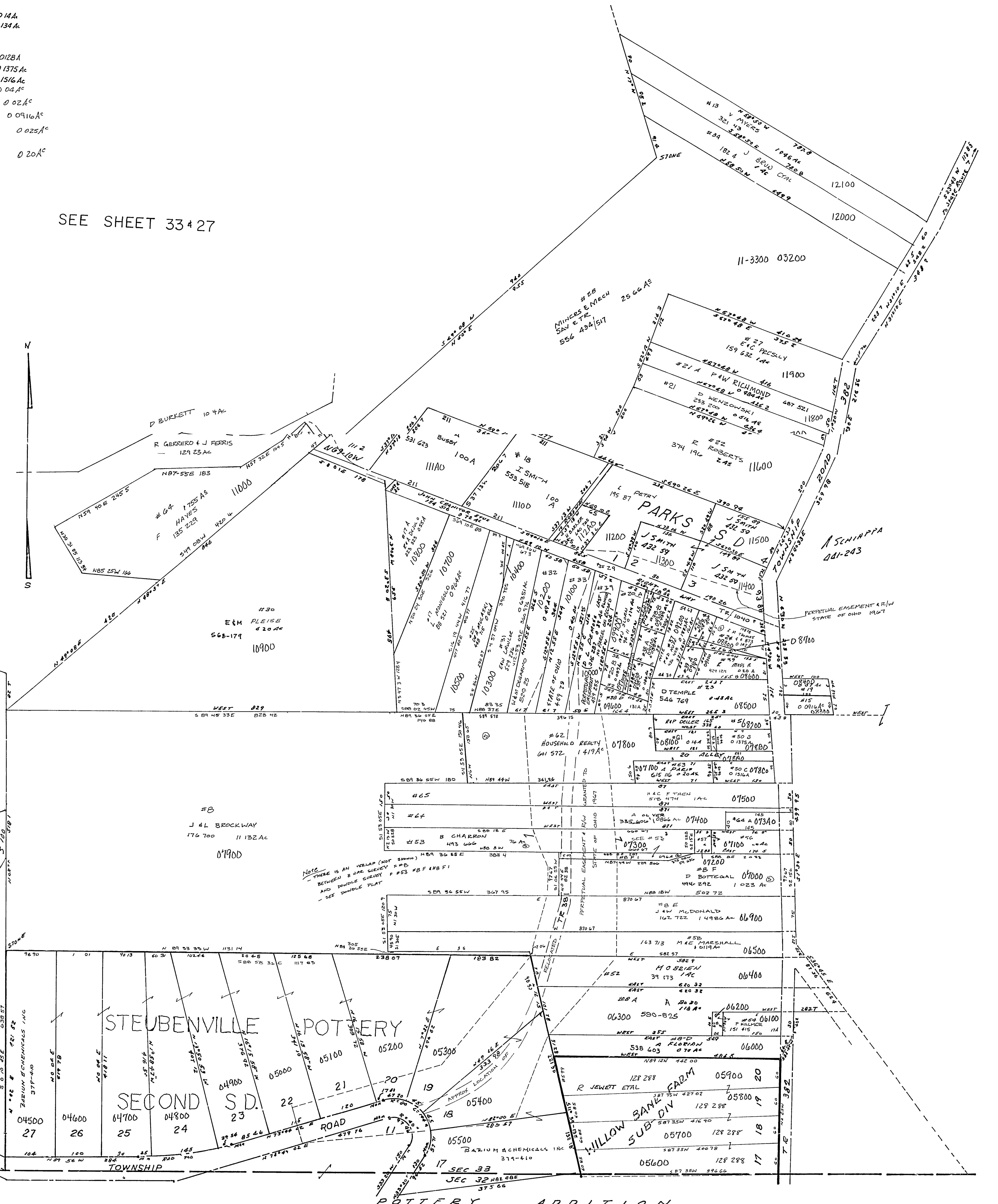


- *24 A C BAUER 403 217 0054A
- *26 A 008A
- *37 A 007A
- *17 IM BAEHWART 484 711 007A
- *38 A L LAURO ETAL 425 333 008A
- *38 C 008A
- *25 D+A MULASKI 448 715 006A
- *31 A 448 718 002A
- *20 H BARKER 501 475 004A
- *38 002A
- *20 B D DANSON 485 342 008A
- *38 D D DANSON 485 342 013A
- *61 J BOULSON 481 336 014A
- *44 A OLIVER 528 339 013A
- *48 P BUTCHER 566 37
- *50 A J BOULSON 481 336 012B1
- *50 B J BOULSON 481 336 012B2
- *50 C 43 860 01375A
- *57 J WOODLAND 604-574 014A
- *18 P KILMER 151 415 012A
- *15 J GRANTONIC 553 7 014A
- *26 R M THOMAS 444-873 012A
- *54 J WOODLAND 604-574 020A

SEE SHEET 33427



09-33A0-

SOUTH PORTION OF SEC.33,T.3,R.1
ISLAND CREEK TWP.
SCALE: 1"=100'

