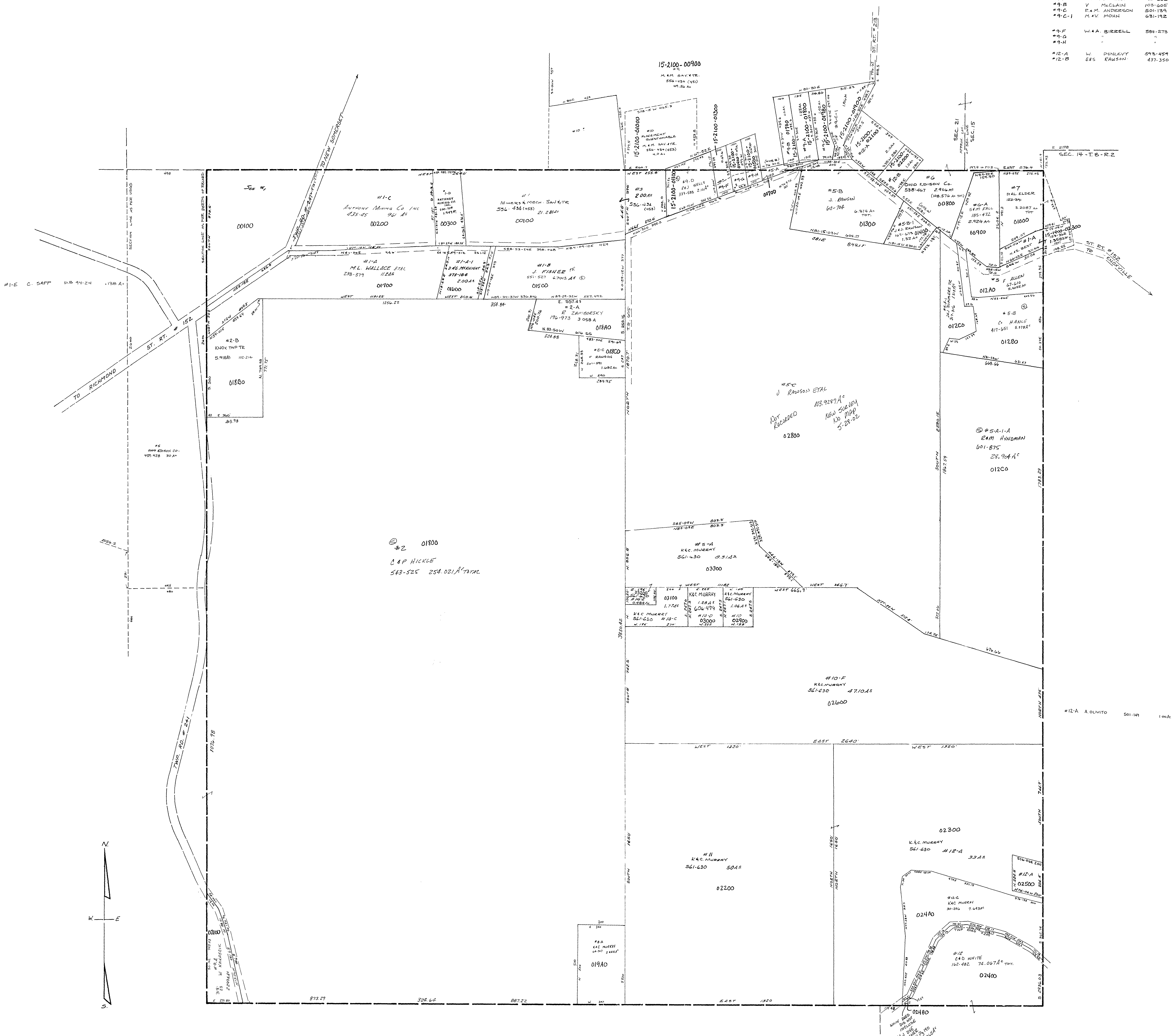


RESIDUE	"S-A	M.M. SAWYER	566-434(442)	0.92 AC APPROX.
#9-A	D.S. MORROW	72-622		1.25 AC
#9-B	V. MCCLAIN	103-505		1.0 AC
#9-C	E.M. ANDERSON	501-199		1.02 AC
#9-C-1	M.V. MOHN	631-192		1.86 AC
#9-F	W.A. BIRRELL	284-273		0.69 AC
#9-G				0.69 AC
#9-H				0.69 AC
#12-A	L. DUNLEVY	593-459		2.0 AC
#12-B	S.S. RAWSON	437-350		1.0 AC



15-2000-

KNOX TWP.
SEC. 20, T. 8, R. 2.
SCALE: 1" = 200'