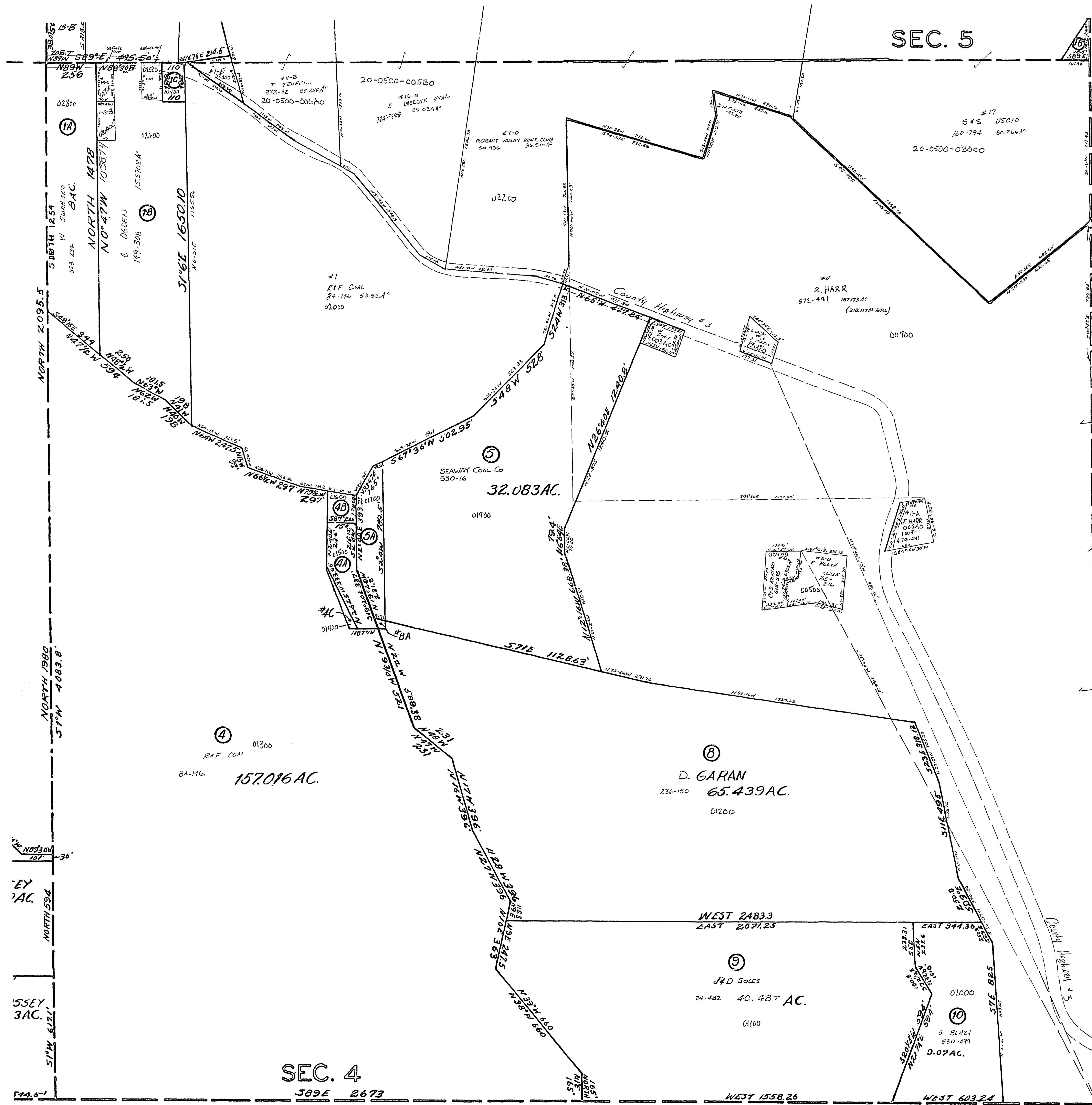
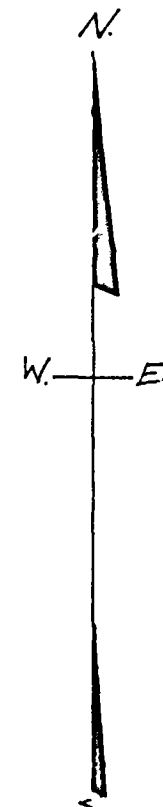


20-0400-



#1-C	L.R. MARZLEY	211-783	.50 AC.
#2-A	REF COAL	84-121	1.757 AC.
#4-B	"	"	.44 AC.
#4-C	"	"	.17 AC.
#5-A	"	"	2.037 AC.
#5-B	"	"	.061 AC.
#5-E	R. SAMBUCCO	196-876	0.074 AC.
#5	ED. HICKS	49-896	.493 AC.
#6-A	D.A. HARR	249-519	.631 AC.
#6-B	L.R. MARZLEY	818-71	.412 AC.
#6	D. BISS	"	0.412 AC.
#6	R. WATSON	534-712	0.762 AC.
#6-A-1	D. HARR	447-328	0.431 AC.
#6-B-3	W. BESS	607-769	0.4123 AC.



MT. PLEASANT TWP.  
SECTION 4, T.7, R.3.  
SCALE: 1" = 200'