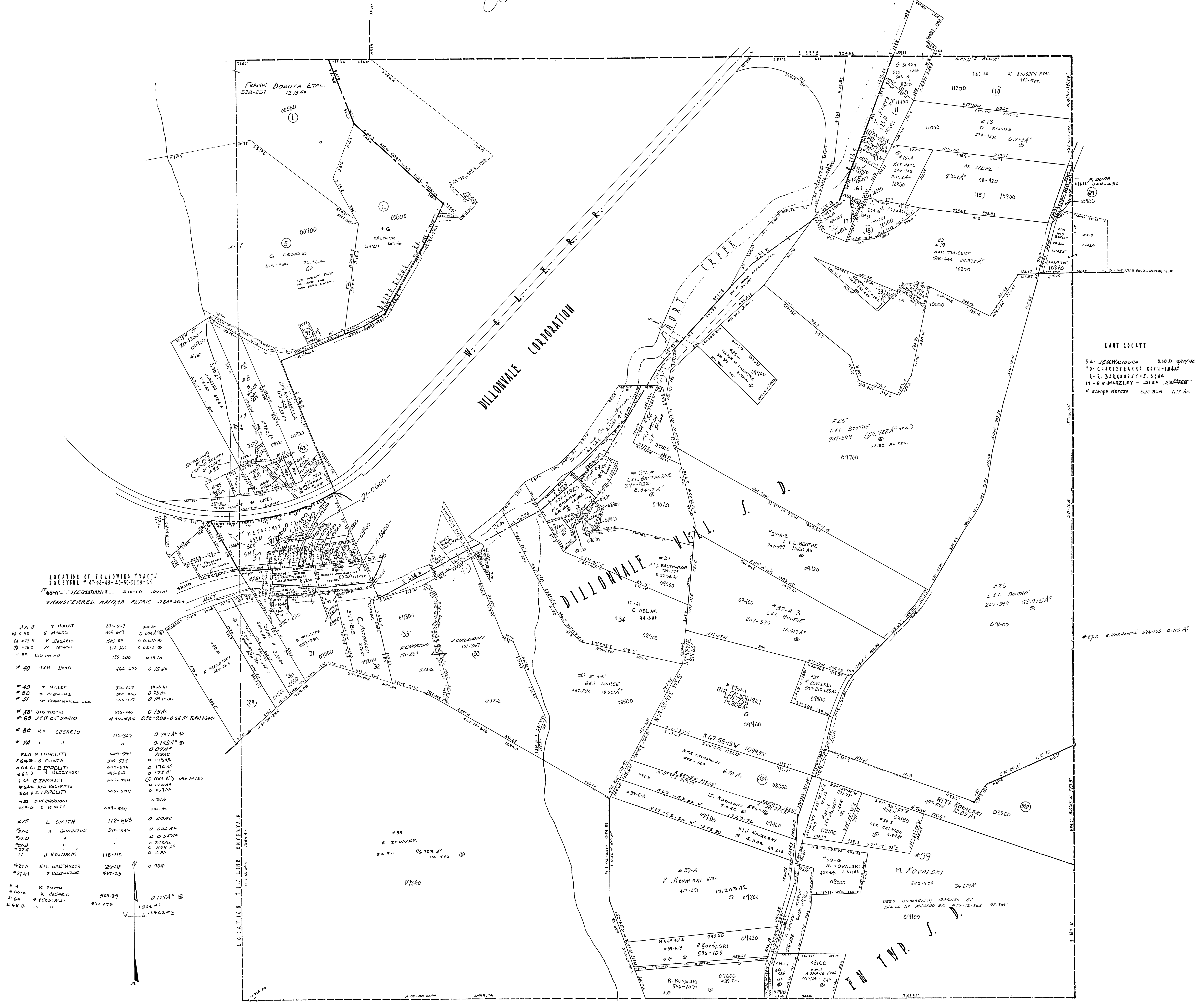


20-0600-



LOCATION OF FOLLOWING TRACTS  
 300 FT. 41-48-49-40-50-51-52-65  
 #65-A-111-MATHIAS 236-40 0.091A  
 TRANSFERRED MATRIB PATRIC 2881-284

#31 B	T. MULET	331-747	0.244A
#32 B	G. MYERS	249-649	0.109A
#33 B	K. CESARIO	285-87	0.014A
#34 B	K. CESARIO	412-327	0.021A
#35	H.W. CO. INC.	125-580	0.19A
#40	T.H. HOOD	466-670	0.15A
#43	T. MULET	331-747	0.244A
#50	D. CLEMONS	389-866	0.126A
#51	ST. FRANCISVILLE LLC	956-107	0.1875A
#58	G.D. TOSTIN	630-440	0.15A
#65	J.P. CESARIO	439-626	0.50-0.08-0.68 Total 1.26A
#80	K. CESARIO	412-327	0.237A
#74	"	"	0.143A
#64A	E. IPPOLITI	604-574	0.07A
#64B	S. FALCETTI	397-338	0.173A
#64C	E. IPPOLITI	604-574	0.176A
#64D	N. ULERYNSKI	497-822	0.172A
#64E	E. IPPOLITI	604-574	0.091A
#64F	A.J. KOVACS	604-574	0.172A
#64G	E. IPPOLITI	604-574	0.163A
#68	D.M. BRIDGEMAN	604-574	0.28A
#69	S. PRINCE	604-574	0.16A
#15	L. SMITH	112-663	0.08A
#27-C	E. BALTHAZOR	370-882	0.026A
#27-D	"	"	0.053A
#27-E	"	"	0.082A
#27-F	"	"	0.145A
#27-G	J. HOJNACKI	118-112	0.14A
#27-A	E.L. BALTHAZOR	128-410	0.18A
#27-H	E. BALTHAZOR	547-23	0.175A
#4	K. SMITH	575-97	0.175A
#80-A	K. CESARIO	577-275	1.236A
#80-B	S. CESARIO	"	"
#80-C	"	"	"

CANT LOCATE  
 54- J.G. WALIGORA 0.10 A  
 70- CHARLETTA KUCH-1044  
 6- R. BARKLEY-5.08A  
 11- D. MARZLEY - 2.11A  
 #5346 MEYERS 522-260 1.17 A

#27-G. R. KOWALSKI 594-105 0.115 A

MT. PLEASANT TWP.  
 SECTION 6, T.7R.3.  
 SCALE: 1" = 200'