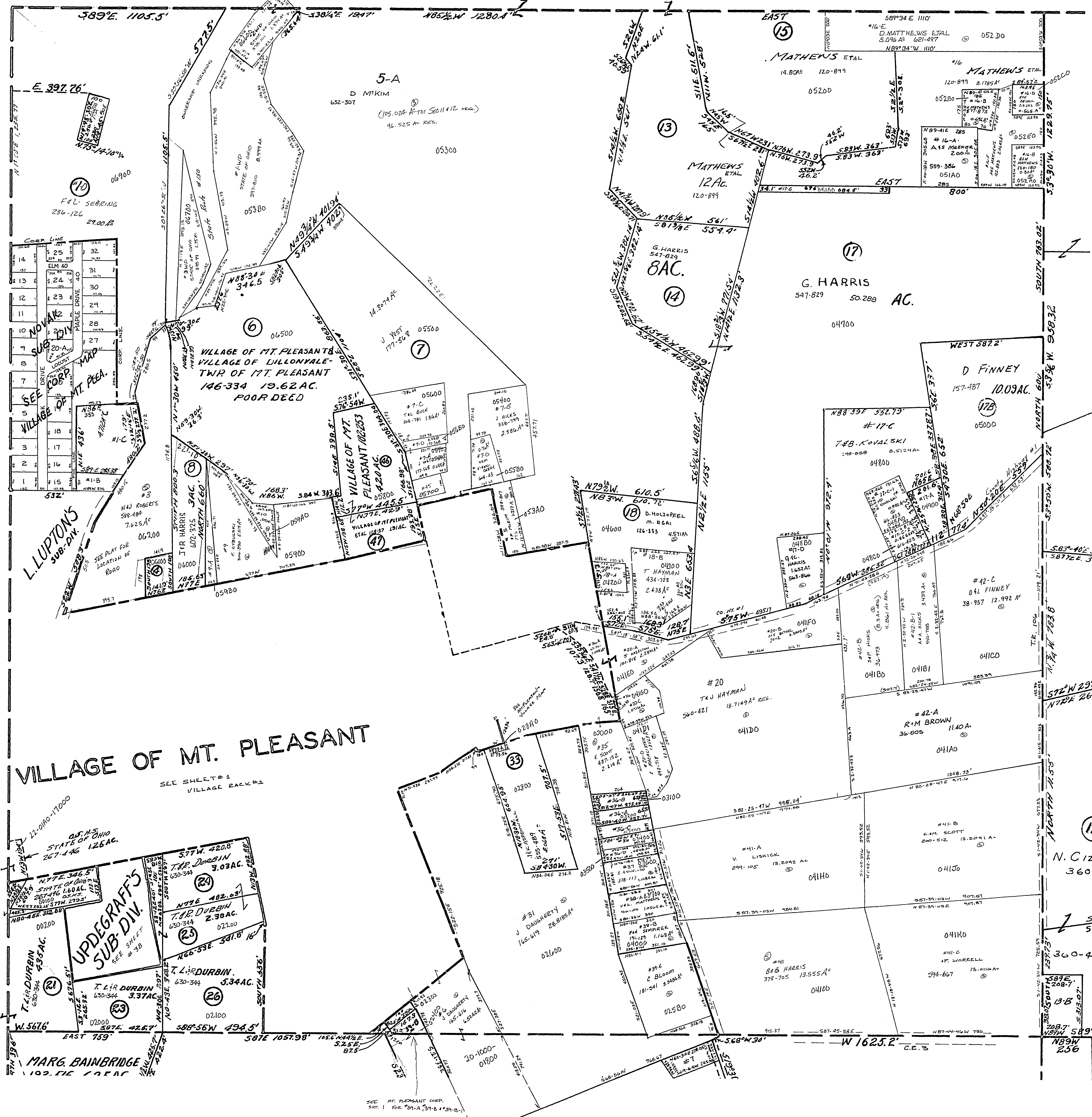


20-1100-

M 184 EAS. SAMBUCCO	6' 10" 11'	55' 11"	
M 184 JEFFCO	598-049	0.574 AC	
M 4	MIS PUGH	437-887	0.065 AC
M 174 W.L. SEMARBUK	1.08 AC	105-147	
M 36 M CARDIGAS TEL	(1.31 AC)	572-447	
M 31A JVS CARAFINO	476-300	0.802 AC	
M 31B BAK SMITH	245-583	1.11 AC	
M 19-A JAR HARRIS	322-918	0.377 AC	

M 45 M WILT	541-102	1.32 AC
M 17-G G HARRIS	547-829	5.71 AC
M 20-C WID STEWART	80-265	1.076 AC
M 26-C W F E HICKS	181-337	443.2 AC

M 35-A SECDOR CEM	0-080 AC	0
M 7-A J YOST	177-568	0.23 AC
M 7-D J YOST	177-568	0.23 AC
M 7-C W F P MORSEHEAD	423-15	1.552 AC
M 18-D W F P MORSEHEAD	423-33	491 AC
M 1-E J.M. DOTY	588-819	0.2740 AC



MT. PLEASANT TWP.
SECTION 11, T.7, R.3.
SCALE: 1"=200'