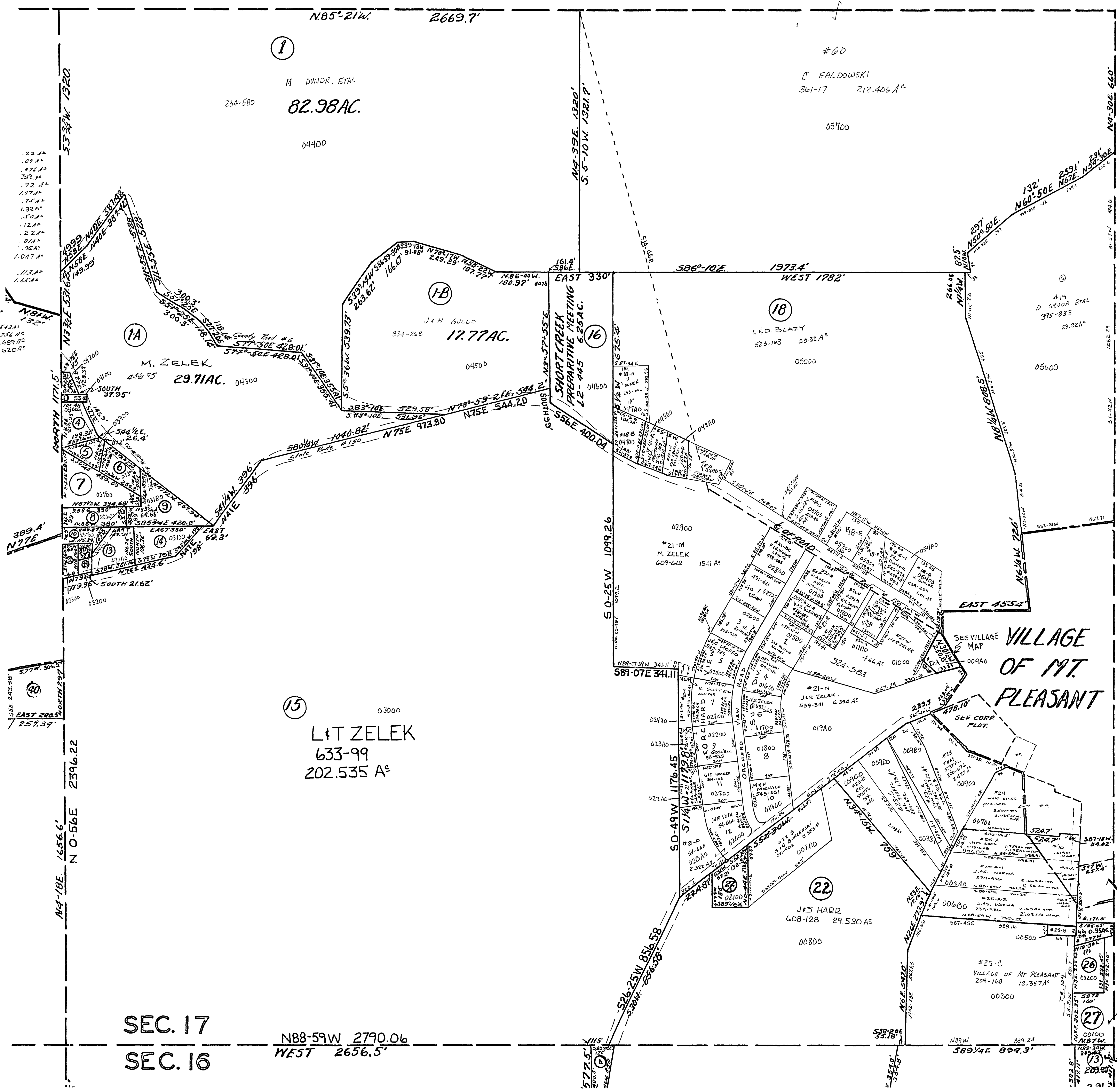


20-1700-

#2	ME RICHARDSON	498-487	.22 A ^c
#3	TOM HENYON	291-242	.07 A ^c
#4	BENWAY COAL CO	604-850	.47 A ^c
#5	J.FE HAYLOCK	507-48	.20 A ^c
#6	BENWAY COAL CO	604-850	.72 A ^c
#7	CONRAD JACKSON	105-274	1.97 A ^c
#8	J. KA SEALS	328-448	.75 A ^c
#9	M. ZELEK	601-243	1.32 A ^c
#10	RUBEN RAINBOW	41-234	.10 A ^c
#11	HE BRIDGES	498-183	.12 A ^c
#12	WENTON St PEG BAR G. Church	426-364	.22 A ^c
#13	M. ZELEK	514-167	.81 A ^c
#14	M. ZELEK	601-243	.95 A ^c
#24	S.V. BURLINSKI	488-260	1.047 A ^c
#26	P. LINDSEY	610-582	.113 A ^c
#27	J.R. DURBIN	630-344	1.65 A ^c
#28	TRUSTEES OF COLORED BAPTIST CHURCH	114	
#18	A.H. TROOD	514-103	.87 A ^c
#21	F.A. WORWIL	380-207	.543 A ^c
#20	V.F. DAVAR	468-21	.75 A ^c
#18	R.H. MALIN	475-229	0.689 A ^c
#18	R.H. MALIN	475-231	0.620 A ^c



ON CORNER 50' BY V. P. LINDSEY CORNER 500' 738

#21-A ZIG FISHER 587-845 .93

#21-J REC. CALL 427-536 0.104 A^c

#25-B J.S. WOODRIF 627-850 0.18 A^c

#26 F. LINDSEY 585-158 1.00 A^c

#18-A W.E.J. FORTUNA 586-143 0.6147 A^c

#23-A J.L. STEFFL 220-690 0.352 A^c

MT. PLEASANT TWP
SECTION 17, T.7, R.3.
SCALE: 1"=200'