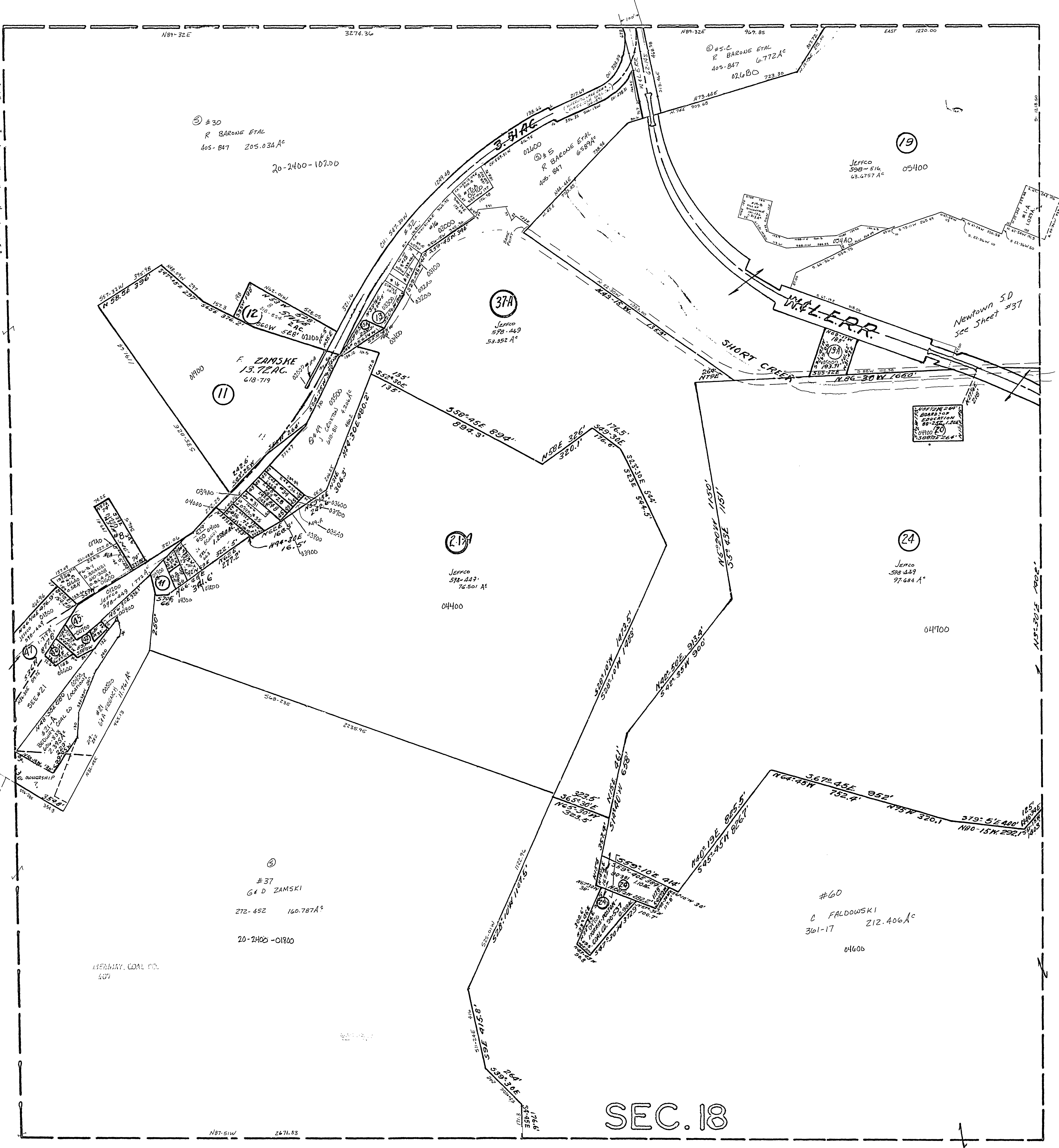


20-1800-

#14	FRANCIS ZAMSKY	183-143	0.6 A ^c
#8	D. KENNEDY	228-386	2.57 A ^c
#14-A	F. ZAMSKI	610-719	0.47 A ^c
#13	M. GENE ETAL	477-844	.72 A ^c
#13-A	COUNTY OF JEFFERSON 180-220		.28 A ^c
#14	M. GENE ETAL	477-844	0.68 A ^c
#25	J. USAM	198-892	.2 A ^c
#14	E. & S. PASCO	152-987	1.071 A ^c
#14-A	E. & S. PASCO	152-887	.525 A ^c
#14-A	BOARD OF EDUCATION	135-429	.78 A ^c
#18	F. C. ZAMSKI	544-17	0.22 A ^c
#31	F. C. ZAMSKI	127-147	0.15 A ^c
#35	BEDWAY COAL CO.	606-936	0.20 A ^c
#34	F. C. ZAMSKI	594-669	.50 A ^c
#35	F. C. ZAMSKI	127-147	0.20 A ^c
#36	"	"	"
#39	A. R. LOGAN	401-257	.28 A ^c
#40	"	"	"
#41	BEDWAY COAL CO.	606-936	0.20 A ^c
#42	"	"	"
#43	G. S. HAMETH	255-1	.18 A ^c
#44	"	"	"
#18	F. C. ZAMSKI	594-669	.50 A ^c
#104	J. R. RYAN	381-750	.27 A ^c
#1-A	R. B. SCARD	613-146	1.029 A ^c
#6-B	L. GAVOREK	440-18	0.58 A ^c
#19-B	VILL OF BILLYVALE	101-136	1.318 A ^c
#32	E. S. PASCO (QUESTIONABLE)	253-314	3.51 A ^c
#14-A	A. NOOTCHIE	473-565	0.162 A ^c
#49-A	F. C. ZAMSKI	610-648	0.095 A ^c



MT. PLEASANT TWP.
SECTION 18, T. 7, R. 3.
SCALE: 1"=200'