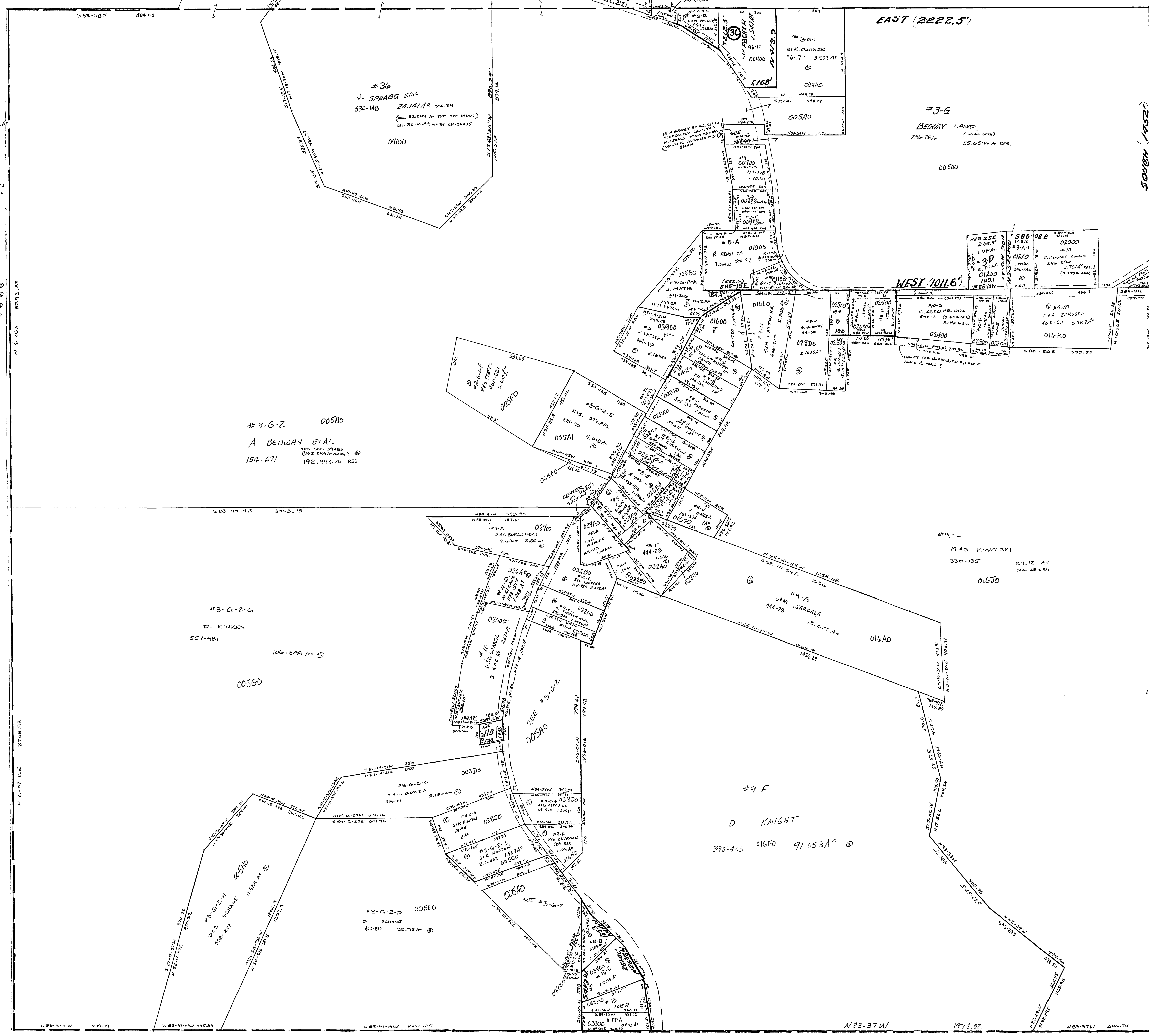


20-3400



#2-F	M.M. SPRAGG	231-276	.5 A
#2	M.M. SPRAGG	493-191	.5000A
#2-A	G. BOWEN	85-113	0.590A
#2-B	R. PICKANI	310-436	.714 A
#2-C	"	"	.554 A
#10-F	R.M. REYNOLDS	603-736	.719 A
#10-A	E. STASKEY	403-404	.671 A
#12-D	S.L. KOHLER	118-929	.545 A
#11-B	OWO POWER CO	236-189	0.27 A
#8-K	J.M. GARGALA	444-218	0.234 A
#8-L	"	"	0.178 A
#12-F	"	"	0.54 A
#8-M	"	"	0.25 A
#8-D	K.K. CASTEEL	67-736	.618 A
#9-C	K.K. CASTEEL	204-476	.186 A
#9-E	A.N. SOOS	153-152	.441 A

#3-G-2 0059D
 A BEDWAY ETAL
 154-671 192.996 AC RES.

#13 GUNTAYLOR 262-121 1.015 A
 #13-A JIS KUHN 632-553 0.803 A
 #13-C H.S. SCHMELUX 585-430 1.009 A
 #13-B J.M. WHITACRE 343-361 0.789 A
 #13-C-2 J.M. WHITACRE " .25 AC

MT. PLEASANT TWP
 SECTION 34, T.7, R.3.
 SCALE 1" = 200'