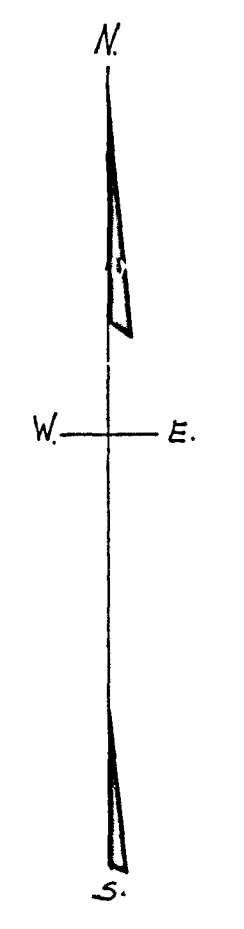
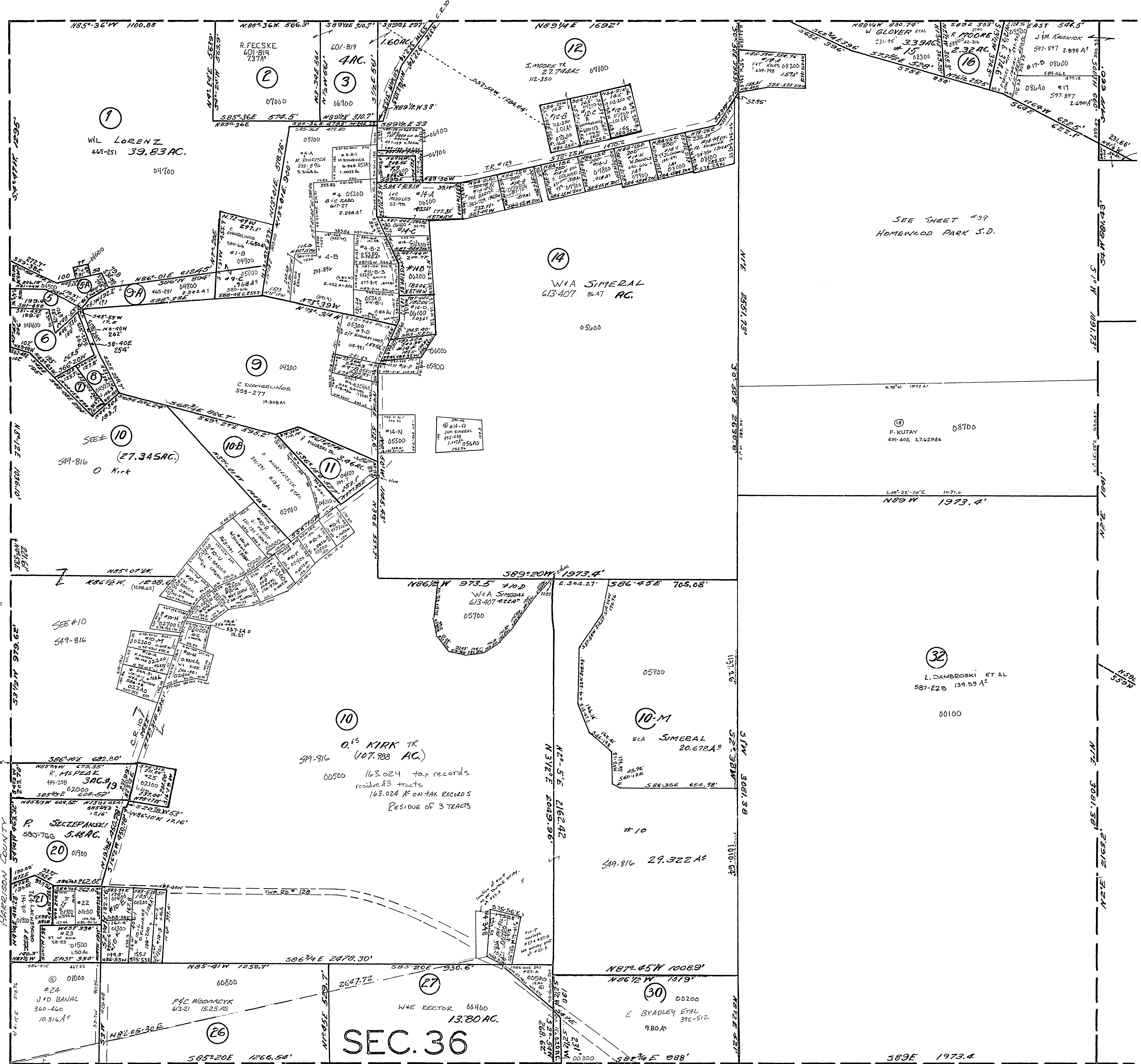


20-3600-

#1-A	M P DUNNING	272-422	.10A
#5	JEFFCO	616-909	2.20A
#6	JEFFCO	616-909	2.6A
#7	JEFFCO	616-909	.79A
#8	JEFFCO	616-909	.82A
#54	SPRIDEL FUEL Corp	454-178	1.23A
#22-A	TIA LACHENDRO	504-859	0.544A
#22	M OSWESKI	146-897	.646A
#14-B	J.K.E. GUESKE	447-115	.997A
#14-C	L.E. MRODAS	52-75	.451A
#19	S.H. SMITH	433-394	0.60A
#14-A	S.H. SMITH	433-394	.34A
#14-F	T.F.F. JESKEY	347-495	.332A
#9-B	W JACKOVITCH ETAL	187-246	.54A
#14-B-2	H.C. VERMEER	517-747	.706A
#14-B-1	E. SMITH	421-044	.84A
#14-J	B. ELIOPULOS ETAL	329-543	0.918A
#14-N	W.A. SIMERAL	459-333	1.00A
#14-D	T.P. JESKEY	347-495	0.234A
#14-C-1	RIC KOWALSKI		0.432A
#14-D	A. STYLWAGAN	451-878	1.03A
#10-B-1	P FIGURSKI	389-7	0.50A
#10-C	W.A. KIRK	240-879	0.4467A
#10-E	J. SEFSICK	606-599	0.665A
#10-F	J.F. FIGURSKI	423-96	0.627A
#10-G-1	R.P. OSZUST	505-465	0.4694A
#10-K	M. BORDUTA	335-33	0.834A
#10-M	S.D. PAWLOV	240-617	0.605A
#10-N	J.J. LEKEU	371-169	0.505A
#10-X	J.A.J. PELTZ	576-881	0.587A
#10-Y	P. CIARLESOWSKI	198-881	0.469A
#25	L.B. KIRK	227-782	1.032A



#27-A 0.45 A. KIRK 534-722 .9A-6

MT. PLEASANT TWP.
SECTION 36, T.7, R.3.
SCALE: 1"=200'