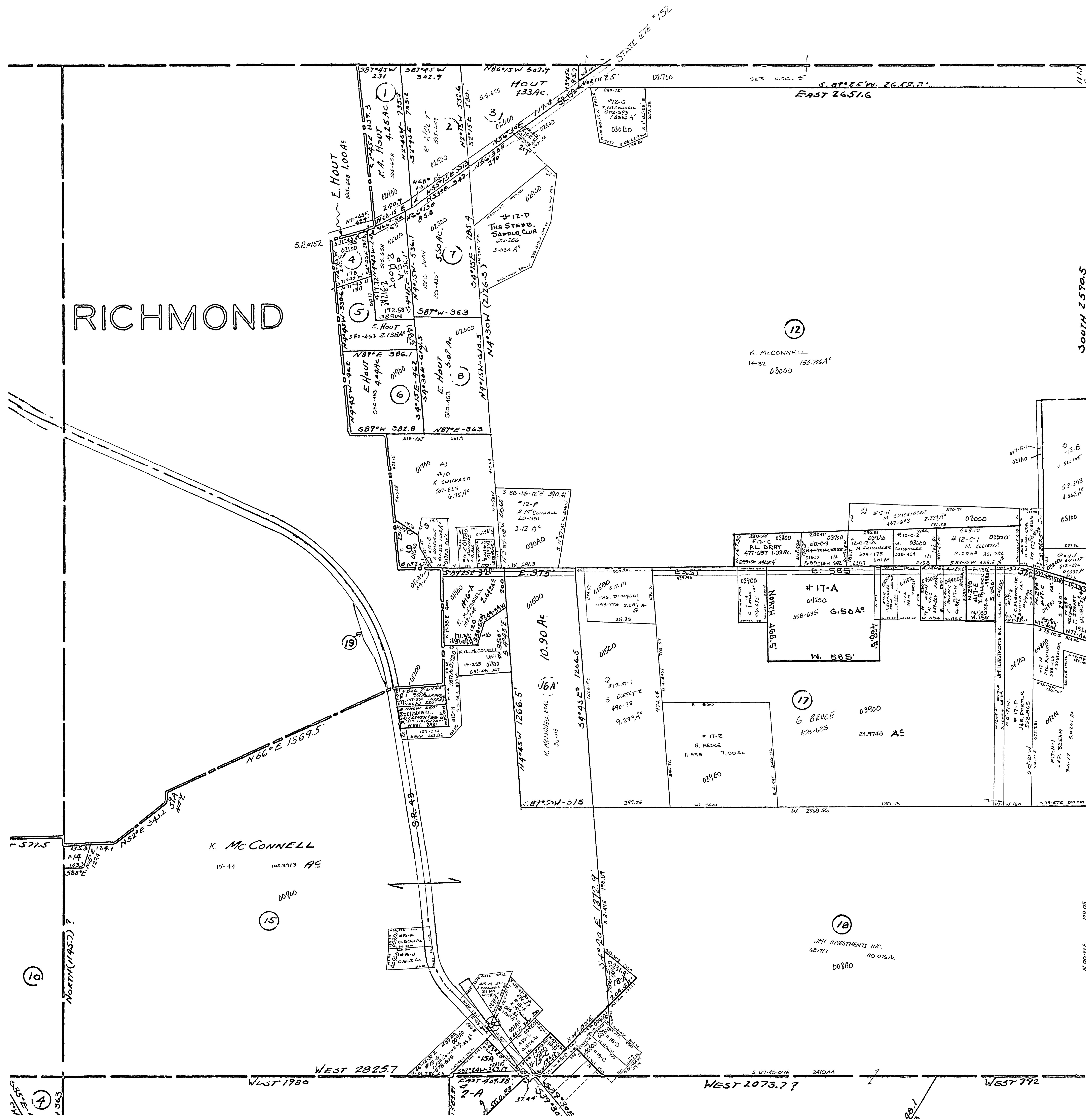


24-0400-



#15-A T. WOOD	.78 AC	112-420
#15-B G.W. MacLELLAND	.51 AC	472-342
#15-D J.M.I. INVESTMENTS INC.	0.80 AC	68-717
#15-F K. McCONNELL ETAL	.54 AC	161-230
#15-G L.B. GRIFFIN	.57 AC	231-025
#15-H E.A.S. BALL	.57 AC	231-215
#15-I K.E.M. McCONNELL	.39 AC	342-24
#15-J R.L. BIRNEY	.11 AC	429-434
#15-K K. McCONNELL	.14 AC	503-423
#15-L K. McCONNELL ETAL	.56 AC	13-304
#15-M K. McCONNELL	.51 AC	167-236
#15-N J. McCONNELL	.54 AC	465-129

#15-H HENY CARPENTER 609-485 0.987 AC
 #15-I B. GILLESPIE 635-734 0.984 AC
 #15-A K. SWICOGARD ETAL 449-118 0.606 AC

#17-C R.L. BIRNEY 443-591
 #17-D K.F. SWICOGARD 274-192 .347 AC
 #17-E K.F. SWICOGARD 578-83
 #17-F K. McCONNELL 167-254 0.14 AC

SALEM TOWNSHIP
 SECTION 4, TW. 10, RANGE 3.
 SCALE: 1"=200'
 1958

4