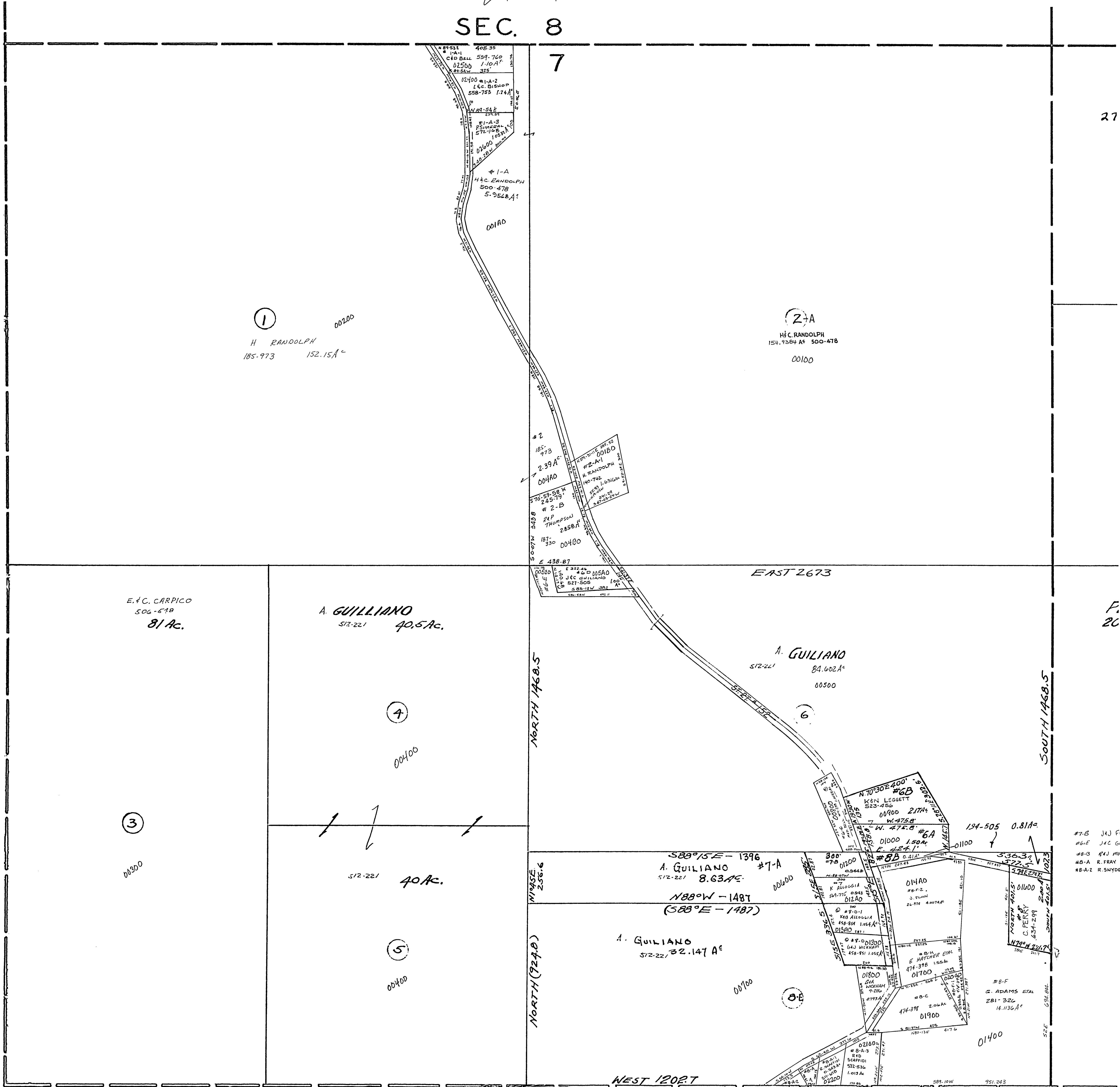


24-0700-

SEC. 8

7



27

F. 26

- #7-B J.J. FLANNAGAN 431-442 0.944Ac
- #6-F J.C. GUILLIANO 170-932 0.638Ac
- #8-C #43 MURKINSON 11-89 0.41Ac
- #8-A R. FRAY 77-805 0.278Ac
- #8-A-2 R. FRAY 608-061 0.171Ac

SALEM TOWNSHIP
 SECTION 7, TWP. 10, RANGE 3.
 SCALE: 1" = 200'
 1958

7