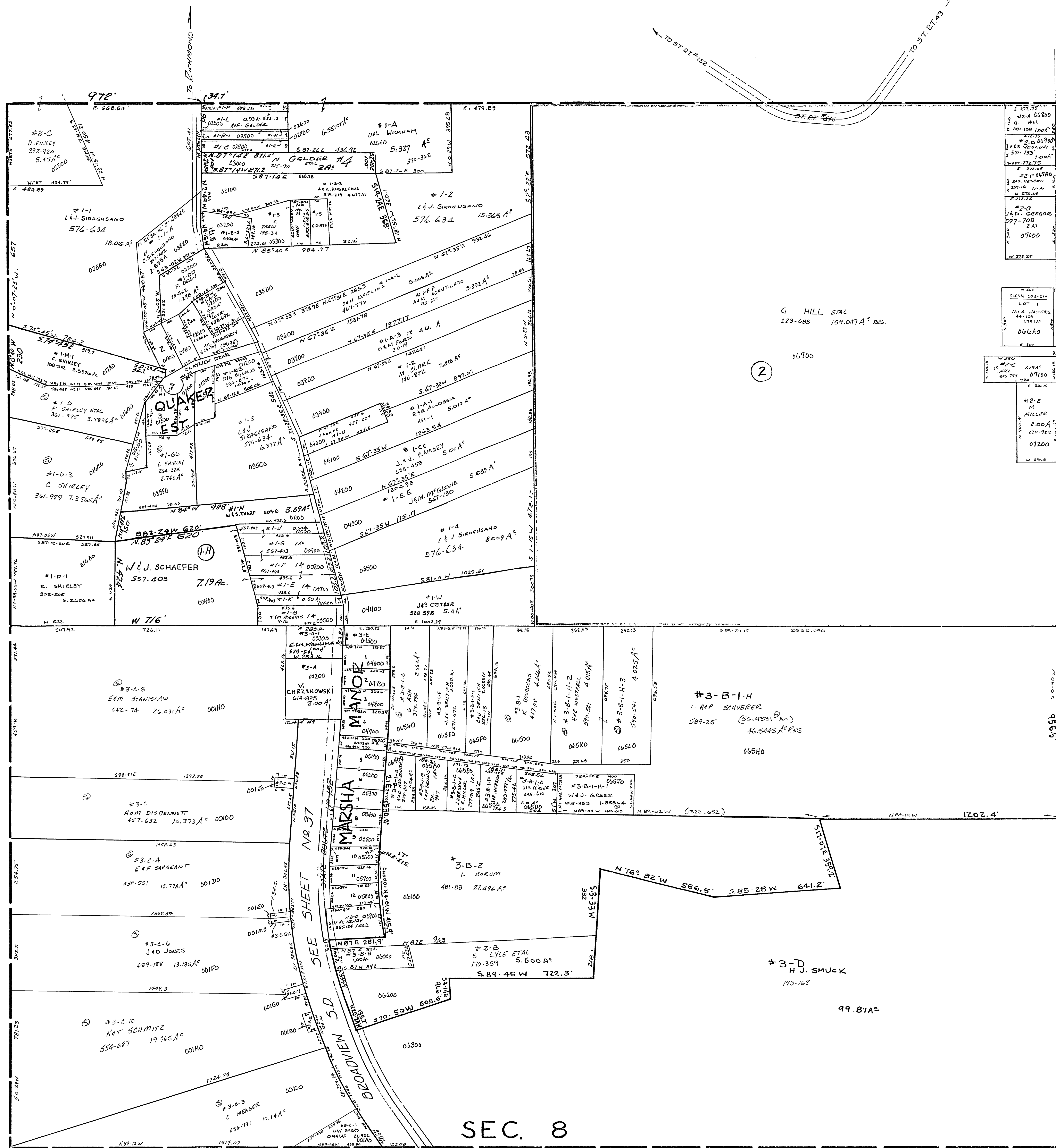


24-0800-



- #3-C-2 170 AND 77 385.946 0.109 A
- #1-D-2 C SHIRLEY 361.989 0.3945 A
- #1-K J.B. GELDER 315.330 0.10 A
- #1-C J. GELDER 611.178 0.50 A
- #1-N M. ROWLAND 472.674 0.10 A
- #1-R-1 M. ROWLAND 472.674 0.40 A
- #1-E E. ROSE 301.01 0.64 A
- #1-B-2 R1 MILLER 80.215 0.934 AC.
- #3 AHP SCHUBERT 597.25 0.303 A
- #3-B-3 L BOKUM 481.88 1.0095 A
- #3-B SEE SECTION 9
- #3-A-7 SEE SECTION 9

- MARSHA MANOR S.D.
- LOT 1 M. MILLER 530-123
  - 2 R. SHIELDS 537.76 102 X 220 W
  - 3 D. SHIELDS W
  - 4 M. SNODGRASS 439.289 145 X 220
  - 5 RAL. POLSINELLI 61-500 100 X 220
  - 6 E.V. DAKEMAN 582-975
  - 7 E.V. DAKEMAN 530-664
  - 8 K. YOCUM 278-878
  - 9 FET LONG 524-537 100 X 220
  - 10 JUD JACKSON 617-116
  - 11 K. BAKER 74-901
  - 12 KAL BAKER 114-509

- QUAKER ESTATES S.D.
- 1 CAT ACANTILADO 32-481 0.5437 A
  - 2 B.C. GREENLEE 22-223 0.5839 A
  - 3 EM WILSON 504-955 0.7781 A
  - 4 R.L. KESTER 377-817 0.8257 A
  - 5 R.L. KESTER 360-917 0.5493 A

- #3-C-5 E.F. SARGENT 507-290 0.057 A
- #3-C-6 A.M. JONES 507-293 0.057 A
- #3-C-7 JAMES JONES 439-188 0.115 A 1/2 INT EACH (KAT SCHMITZ 554-687)
- #3-C-8 E.F. SARGENT 442-74 0.115 A 1/2 INT EACH (RAM DISBENNETT 457-632)
- #3-C-9 E.F. SARGENT 442-74 0.115 A 1/2 INT EACH (RAM DISBENNETT 457-632)
- #3-C-10 KAT SCHMITZ 554-687 19.465 A
- #3-C-3 C. HERBERG 430-791 10.14 A

SALEM TOWNSHIP  
SECTION 8, TWP. 10, RANGE 3.  
SCALE: 1" = 200'  
1958

8

116