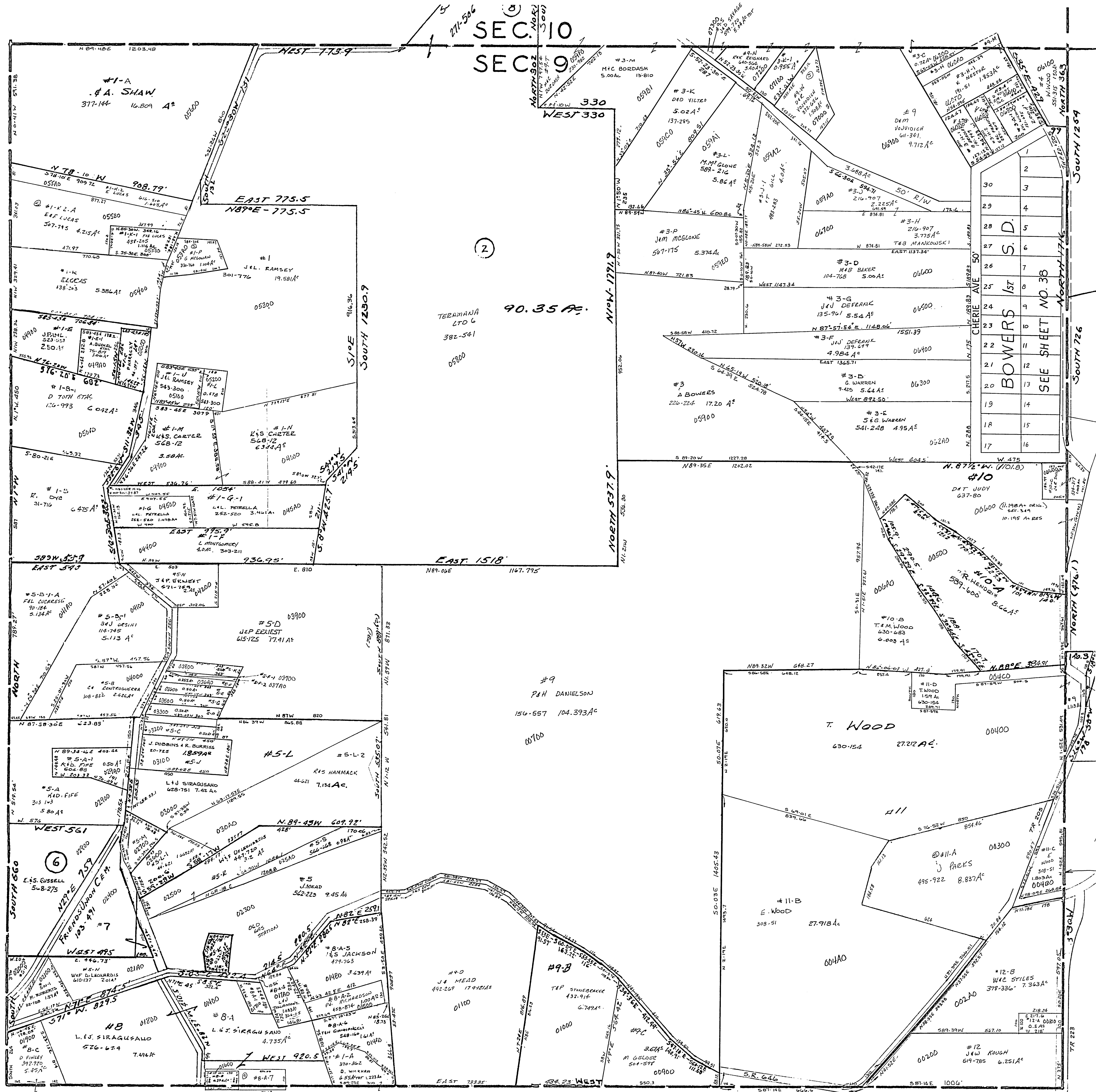


24-0900-

- #3-H OLS NESTER 0.348A 546-215
- #4-K P. FLENNIKEN 0.502A 425-744
- #5-F-1 P. FLENNIKEN 0.08A 425-744
- #5-F-2 P. FLENNIKEN 0.065A 425-744
- #5-C T. T. DUNLAP 0.50A 345-422
- #5-E B. BURDESS 0.50A 158-535
- #5-G " 0.50A "
- #5-F " 0.355A "
- #5-M L. J. SIRAGUSANO 0.231A 158-247
- #5-P R. SILVERNAIL 0.50A 437-234
- #5-B R. SHARP 0.37A 355-66
- #2-A J. M. KIDGH 0.50A 145-487
- #5-A-1 S. MARTIN 0.618A 514-145
- #5-A-1 G. K. PHILLIPS 410-215 412A
- #5-A-7 R. E. SHARP 355-24 5.011A



SEC. 10
SEC. 9

90.35 A.

BOWERS 1ST
SEE SHEET NO. 38

NOTE:
#11-C J PARKS 174-502 1.93 A
NOT SURE OF LOCATION BUT COULD
BE THE SAME TRACT #11-C

SALEM TOWNSHIP
SECTION 9 TW. 10, RANGE 3.
SCALE: 1"=200'