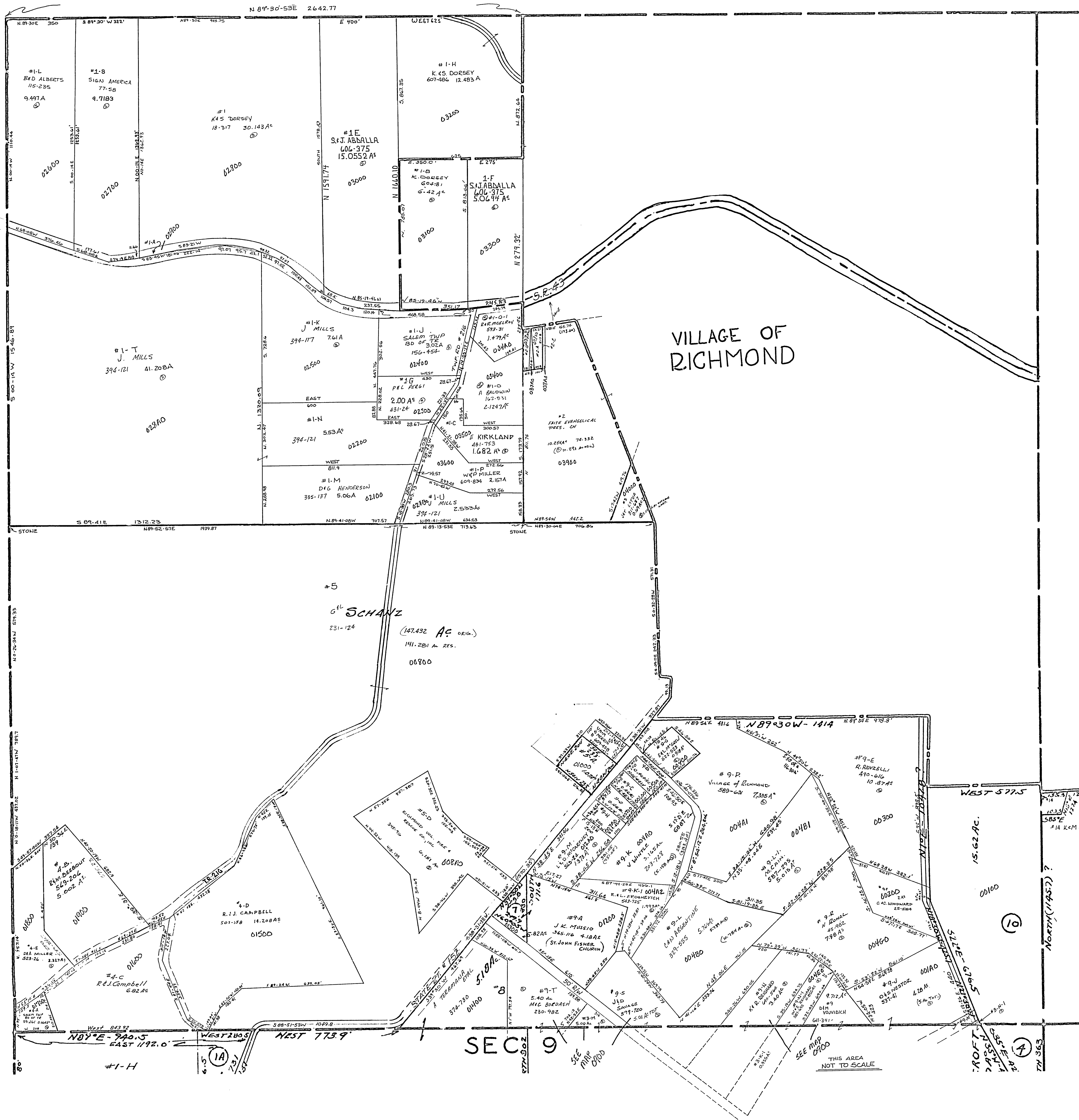


24-1000-

* 1A BOARD OF COUNTY COMMISSIONERS 1.6 AC 138-340



#2-C	D & S HUGHES	154-808	0.0375 AC
#2-B-1	L & S HUGHES	154-808	0.0719 AC
#2-A	"	"	0.2554 AC
#2-D	FATH EKHSELICA	152-305	0.171 AC
#7	C. Johnson	462-103	1.70 AC
#9-H	F & P OUTER	347-313	0.46 AC
#9-D	"	"	"
#9-B	D & C TRUAK	594-811	0.46 AC
#9-C	"	594-811	0.46 AC
#3-M	MHC BODDASH	13-810	5.00 AC
#5-A	THE RICHMOND LIONS CLUB	25-108	1.07 AC
#3-H-1	K NESTOR	191-57	1.853 AC
#9-M	D & S NESTOR	566-295	0.112 AC

SALEM TOWNSHIP
SECTION 10, TWP. 10, RANGE. 3.
SCALE: 1" = 200'
1958

104
10

