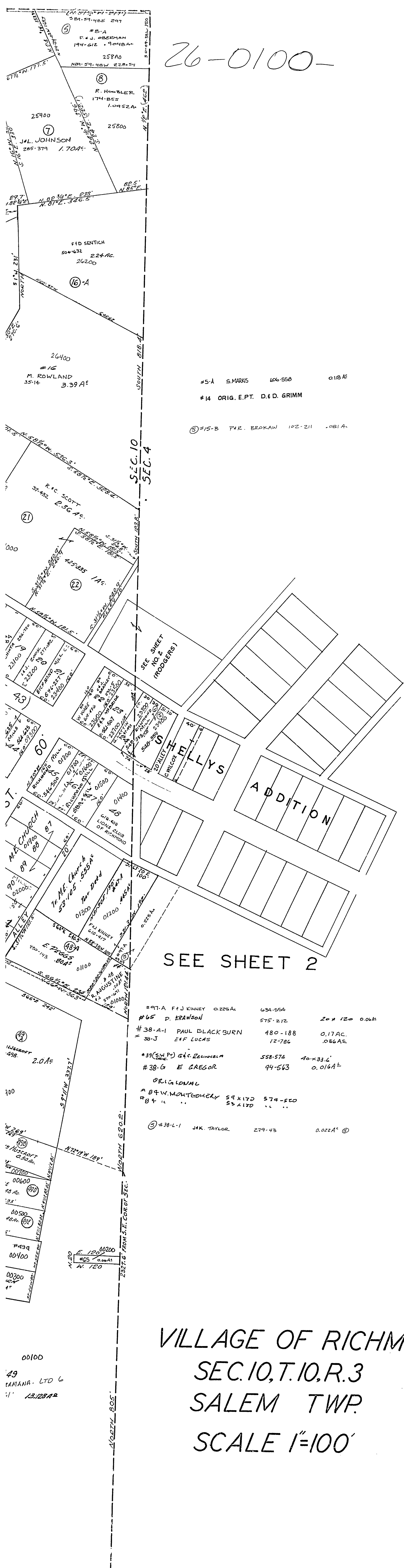


26-0100-



#5-A S.MARRS 606-550 0.18 AC
 #14 ORIG. E.P.T. D.&D. GRIMM
 #15-B P.R. BRADAW 102-211 0.91 AC

SEE SHEET 2

#97-A F.J. KINNEY 0.22 AC 634-554
 #65 D. BRANSON 575-212 20 x 120 0.04 AC
 #38-A-1 PAUL BLACKBURN 480-188 0.17 AC
 #38-J E.F. LUCAS 12-786 0.06 AC
 #38 (S.W. 1/4) G.F. BRANSON 558-574 10 x 33.6'
 #38-G E. GREGOR 94-563 0.016 AC
 ORIGINALLY
 #84 W. MONTGOMERY 58 x 170 574-220
 #84 " " " " " " 574-170 " " " "

#38-L-1 J.K. TAYLOR 279-43 0.022 AC

VILLAGE OF RICHMOND
 SEC. 10, T. 10, R. 3
 SALEM TWP.
 SCALE 1"=100'

