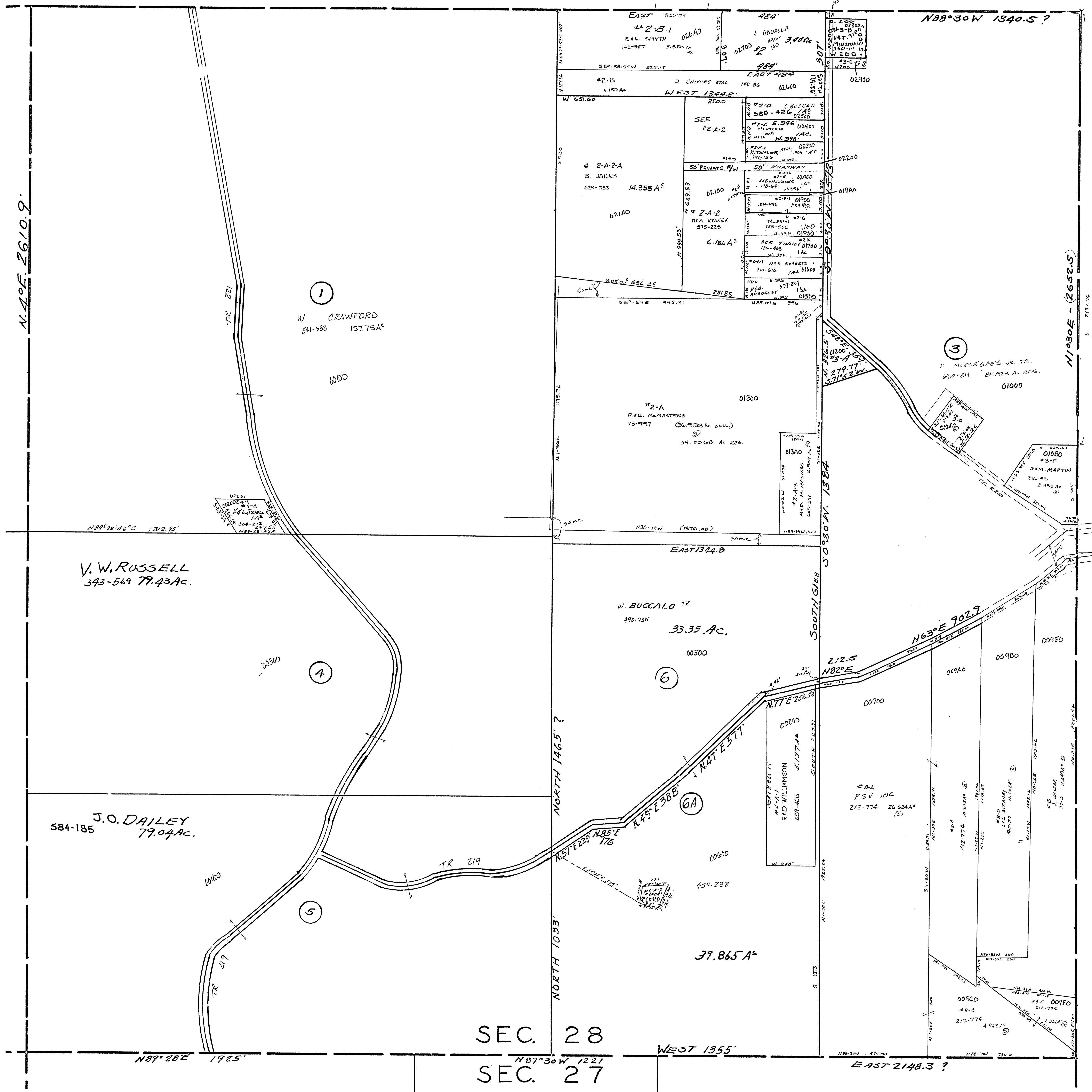


24-2800-



#3-D	H.J. Muesel Gies	590-247	0.99 Ac.
#2-H	J.V. Booth		
#2-F	R.B. Waggoner		10.396
#4-A-2	W. Buccalo	259-239	0.248 Ac.
#3-C	H.J. Muesel Gies	597-557	0.25 Ac.
#3-A	R.L. Wainline	515-411	1.00 Ac.

SALEM TOWNSHIP  
SECTION 28, TWP. 10, RANGE. 3.  
SCALE 1"=200'  
1958

28

101  
28