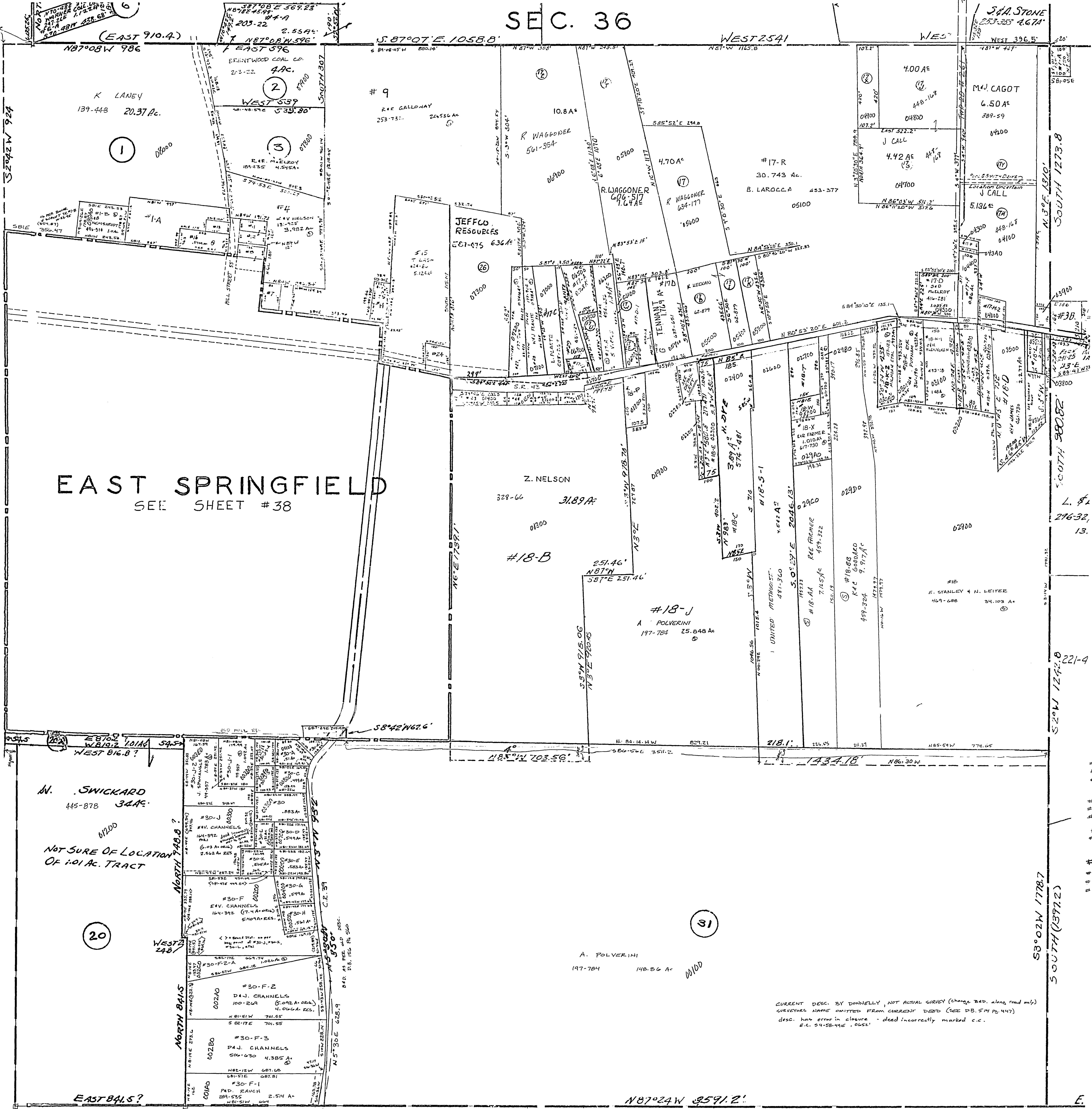


24-3500

SEC. 36



#17-C	W.J. PLANT	131.21	531-26
#17-D	J.K. DAVIS	1.2082 A	125-247
#17-D-1	G.M. TENANT	0.0158 A	175-194
#17-F	W.J. PLANT	0.8445	457-97
#17-M-2	W.J. PLANT	0.544 A	447-100
#17-N	W.J. PLANT	0.81 A	457-27
#17-K	F. BARBER	1.0025	200-991
#17-P	W.J. PLANT	2044	473-94
#17-V	H.V. JAMES	0.228 A	401-730
#17-W	W.J. PLANT	0.184 A	457-96
#17-X	D. STACEY	0.334 A	44-565
#17-U	D. CULP ET AL	0.528 A	347-210
#17-V	W.J. PLANT	0.2045	457-27
#17-W	A. MARLE	0.2045	598-272
#17-X	D. WILBY	1.0395	371-411
#17-Z	J.K. DAVIS	0.20745	726-617
#17-A	D. CULP ET AL	7.6845	347-210
#17-B-2	"	0.015	"
#17-C	R. MARLE	1.2204	307-209
#18-G	D. DOTSON	7.7 A	634-511
#18-H	"	2.0 A	"
#18-W	E. SPRINGFIELD CHURCH	340.1 A	373-104
#18-M	E. MILLER	0.014 A	377-1
#18	M. MORAN	0.405 A	236-126
#11	C.K. MCELROY	0.18 A	266-180
#12	C.K. MCELROY	0.18 A	266-180
#18	W.A.M. MCELROY	0.18 A	430-130
#9	J. DALANCY	0.570 A	18-216
#16	R. SCHWENKER	0.340 A	238-770
#18-M	E.C. BUNDLE	4.8-4.0	0.24 A
#18-E	"	4.8-4.0	0.944 A
#18-K-2	T. GRIMM	0.597 A	574-82
#24	JEFFLO	597-94	0.36 A
#1-A	H.E. BOOTH	511-125	2.0 A
#13	"	"	0.16 A

CURRENT DESC. BY DIMENSIONALLY NOT ACTUAL SURVEY (CHANGE 2ND. ALONG ROAD AND 1/2)  
 SURVEYS NAME OMITTED FROM CURRENT DEEDS (SEE DEED 514 PL. 447)  
 DESC. HAS ERROR IN CLOSURE - DEED INCORRECTLY MARKED E.C.  
 E.C. = ENCLOSURE - DEED

#18-B	J. E. MAHONY	251-624	0.33 A
#18-P	F.H. MAHONY	227-625	0.18 A
#18	Z. NELSON ET AL	318.9 A	1.7 A
#18	"	"	1.85 A
#18	"	"	0.24 A
#18-L	H.V. JAMES	294-592	0.528 A
#18-P	A.K. GLISSE	46-590	0.611 A
#18-T	UNITED BRETH CHURCH	358-156	1.00 A
#18	J.E.O. CARTER	371-566	1.30 A
#18	L.L. MITCHELL	77-441	1.24 A
#18	"	"	1.8 A
#18-A	E. WAUGHAN	582-525	0.0 X 1.72
#18	J. MATUSKA	5165-109	0.36 A
#30	V. ADAMS	580-255	1.605 A
#30-A	E. BOURGEOIS	231-110	1.514 A
#30-W	E.V. CHANNELS	164-192	1.761 A
#30-F-2-A	E.V. CHANNELS	510-628	1.026 A
#30-E	D.S. DEWORE	475-227	1.583 A
#30-K	D.S. DEWORE	580-256	1.595 A
#30-D	B. HOUSEHOLDER	497-993	1.549 A
#30-L	"	"	1.31 A
#30-C	J. SPONAUER	85-285	1.499 A
#30-J-3	"	"	(1.03 A-0.016) 1.014 A RES.
#30-A	D.L. SPONAUER	632-893	1.51 A
#30-J-3-A	D.L. SPONAUER	44-680	1.531 A
#30-A-1	G. ROGERS	629-316	1.209 A

SALEM TOWNSHIP  
 SECTION 35, TWP. 10, RANGE. 3.  
 SCALE: 1" = 200'  
 1958

