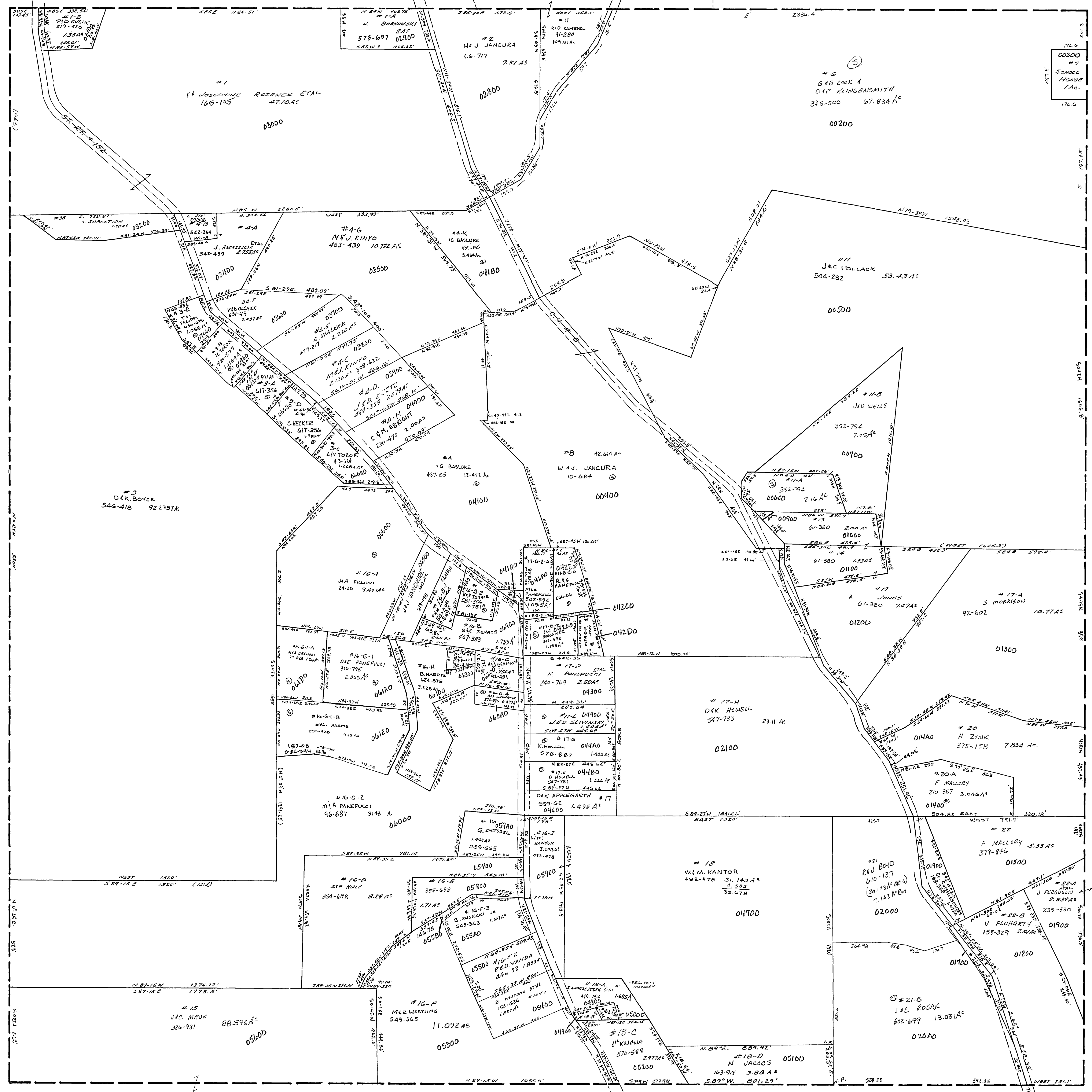


30-0900

#1-B	J. J. J. J.	554-741	0.5145
#1-C	F. B. WALDRIN	480-23	0.0524
#1-D	J. D. WELLS	352-795	0.0524
#1-E	J. M. PANEPUCI	546-51	0.0758
#1-F	A. FISH ETAL	79-565	0.1534
#1-G	A. FISH ETAL	79-565	0.1534
#1-H	A. FISH ETAL	79-565	0.1534
#1-I	A. FISH ETAL	79-565	0.1534
#1-J	V. FLUHARTY ETAL	157-329	0.0774
#1-K	M. A. PANEPUCI	542-592	0.3022
#1-L	S. P. NIBLE	26-188	0.1425
#1-M	M. S. PANEPUCI	87-430	0.1425



SMITHFIELD TWP
 SEC. 9, T. 8, R. 3.
 SCALE 1"=200'