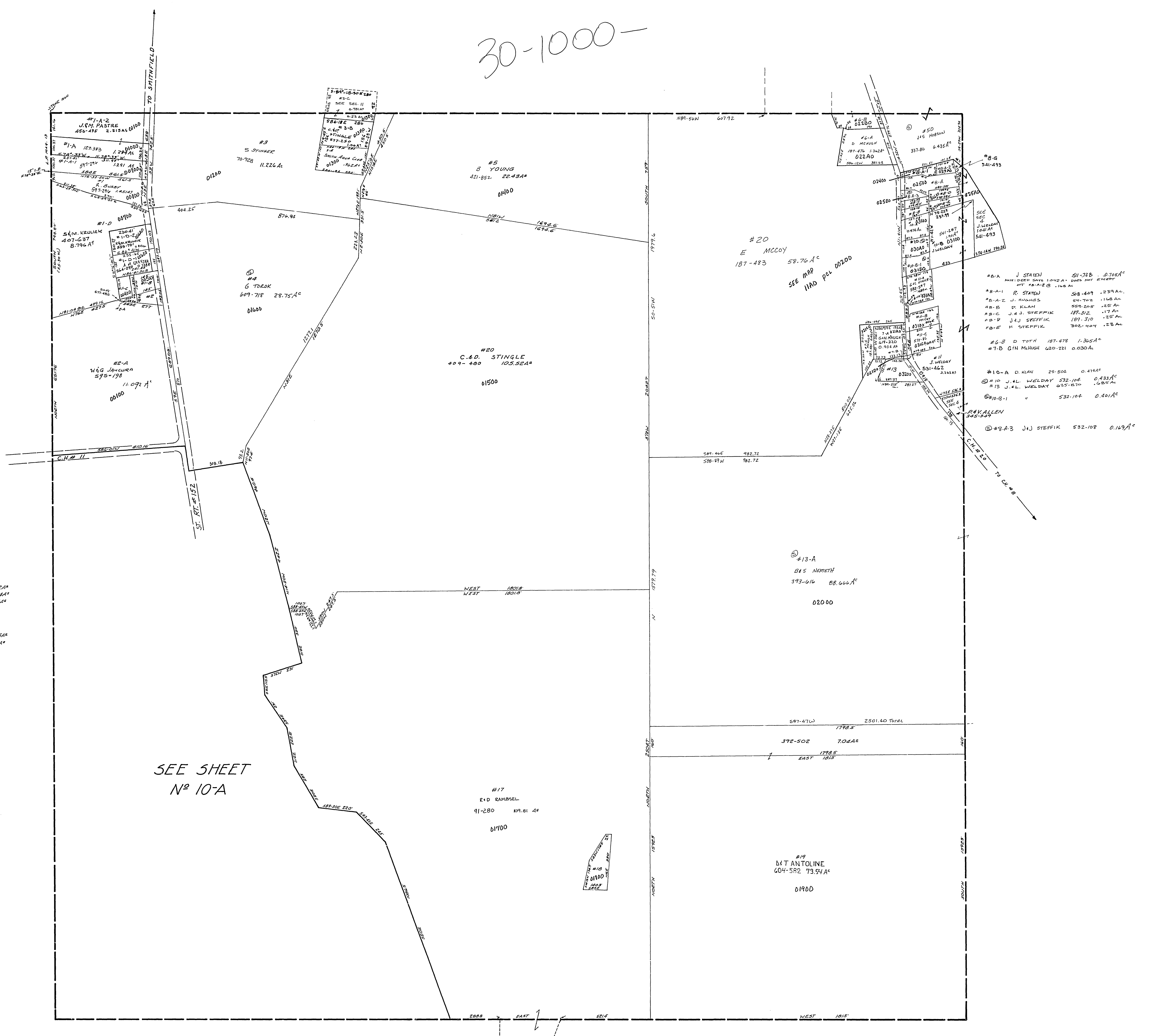
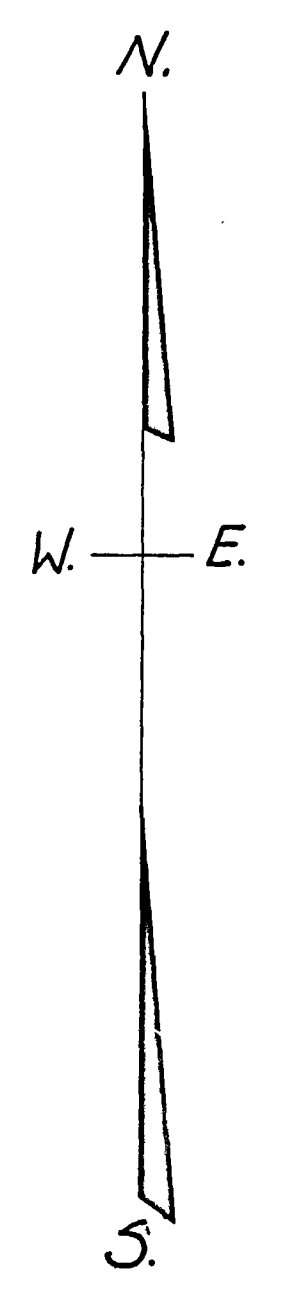


30-1000-



#1-B	G. B. KIRK	552-61	.332A
#1-C	" "	" "	.364A
#2	G. B. KIRK	580-107	.103A
#24	G. B. KIRK	580-107	.065A
#10	J. W. PASTRE	480-64	.69A



SEE SHEET
No 10-A

SMITHFIELD TWP.
SEC. 10, T. 8, R. 3.
SCALE: 1" = 200'