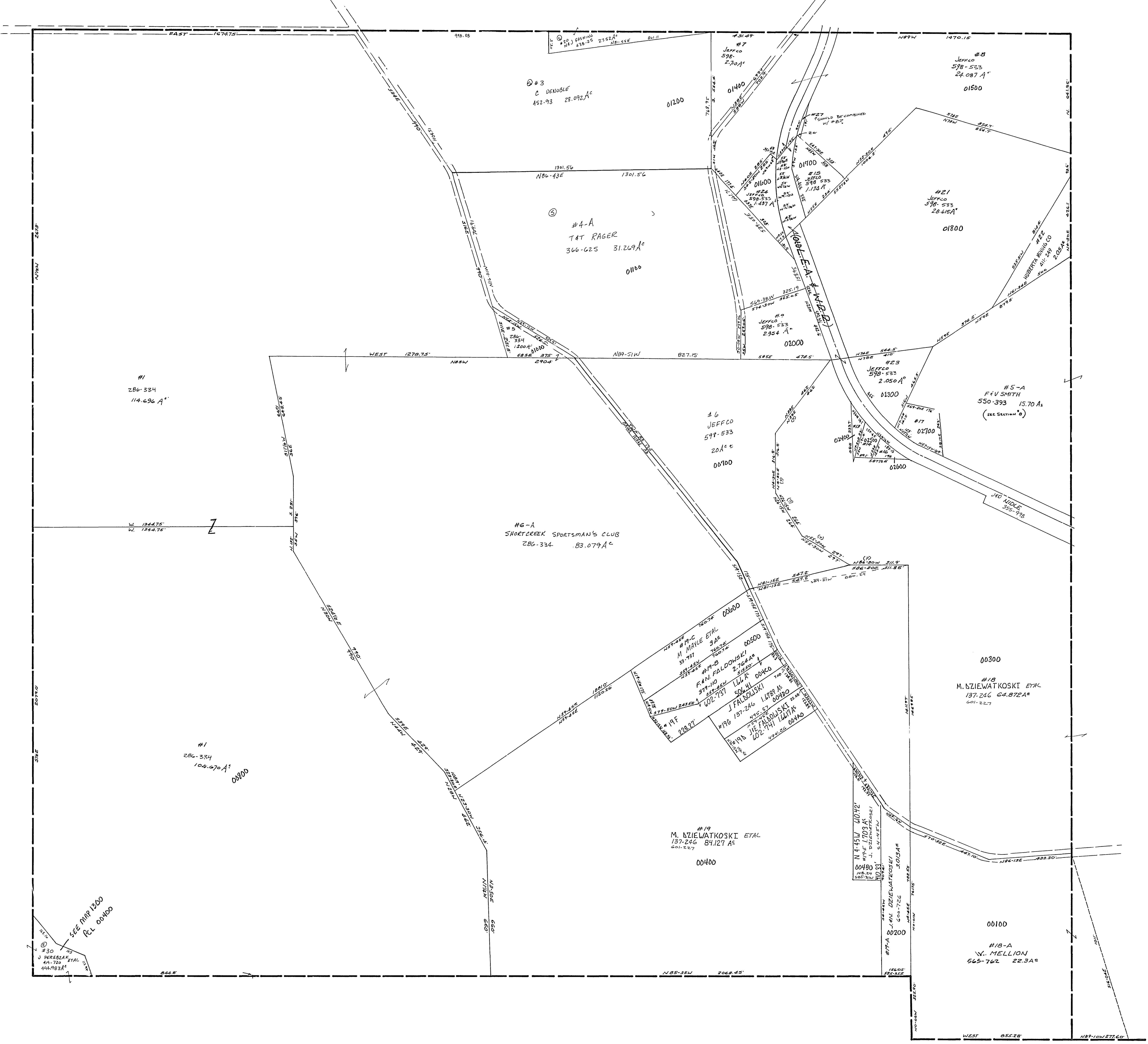


30-1400-

#13	JEFFCO	598-533	2.58A ^c
#14	R DOMINICK ETAL	357-206	100A ^c
#16	G PEIARSKI	28-157	.31A ^c
#17	M/S PANERUCCI	46-687	100A ^c
#27	JEFFCO	598-533	.02A ^c



SMITHFIELD TWP.
 SEC. 14, T. 8, R. 3.
 SCALE: 1"=200'