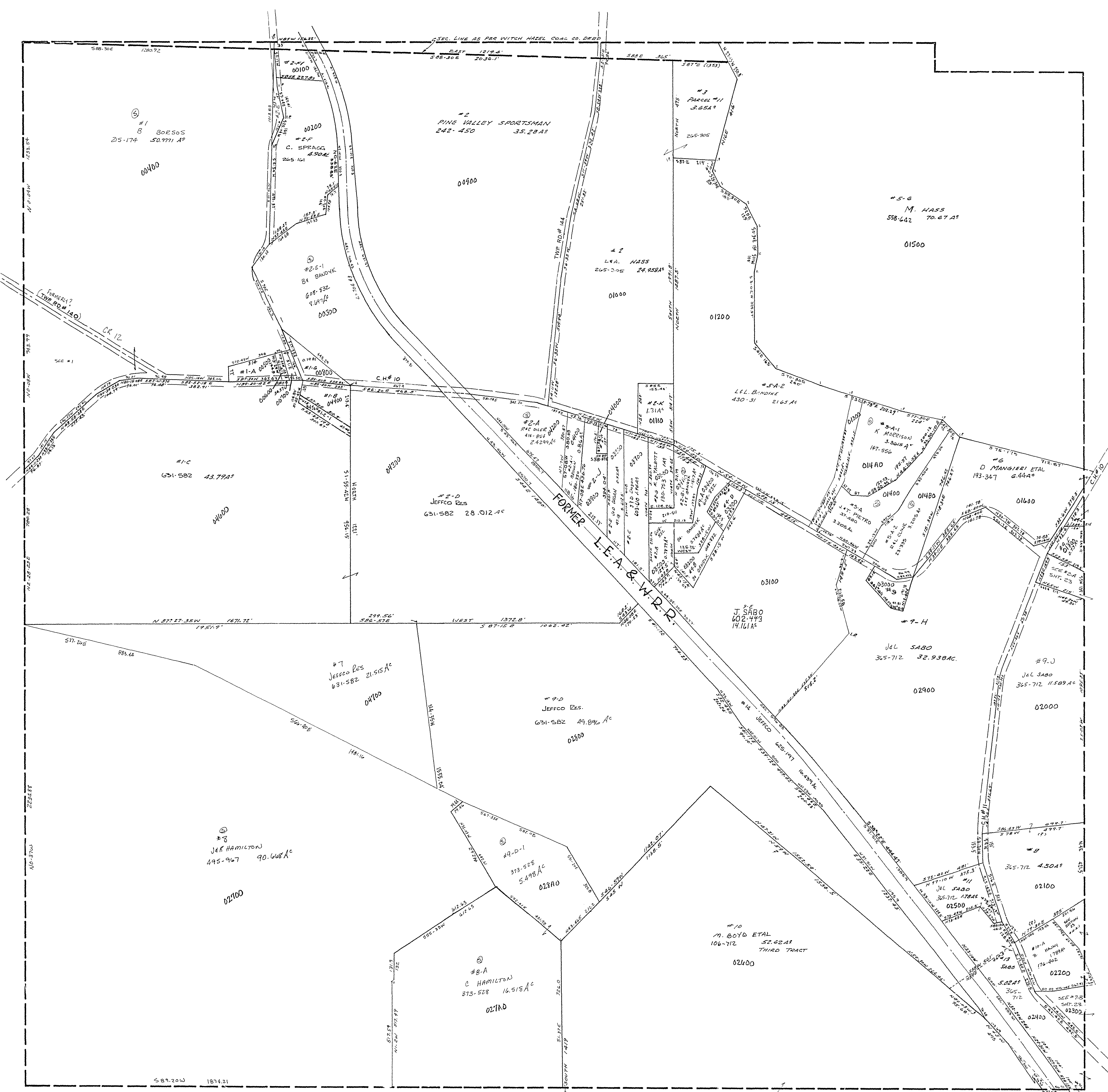


30-2900-

#1	R. HERSHBERGER	0.282 AC	510-110
#2A	E.L. BOYD	0.695 AC	430-362
#2B	J.F. GALIK	0.84 AC	340-77
#2C	J.F. GALIK	0.28 AC	340-77
#2E	L.R. BOYD	0.178 AC	388-76
#2F	J.F. GALIK	0.77 AC	383-72L
#2H	D. BUCKY	0.77 AC	327-74B
#2M	M. GARDNER	1.81 AC	478-504
#2K	M. GARDNER	1.68 AC	395-140
#2C	W. ANKUM	0.615 AC	400-789
#1A-1	L.R. BOYD	0.12 AC	388-76
#2A-1	R.L. DOWDELL	0.00 AC	615-46
#2D	A.R. DWARZI	0.64 AC	499-235
#2	K.B. FARDONIKI	0.22 AC	452-935
#1-D	B.J. AGRASSAN	0.54 AC	572-365
#2-H	K.M. DAGAN	0.17 AC	299-261
#47	I. SABO	4.50 AC	578-303
#9-F	N. ANKUM	0.73 AC	400-789



#8 JEFFCO RES. 41-138 0.562 AC

SMITHFIELD TWP.
 SEC. 29, T. 8, R. 3.
 SCALE 1"=200'