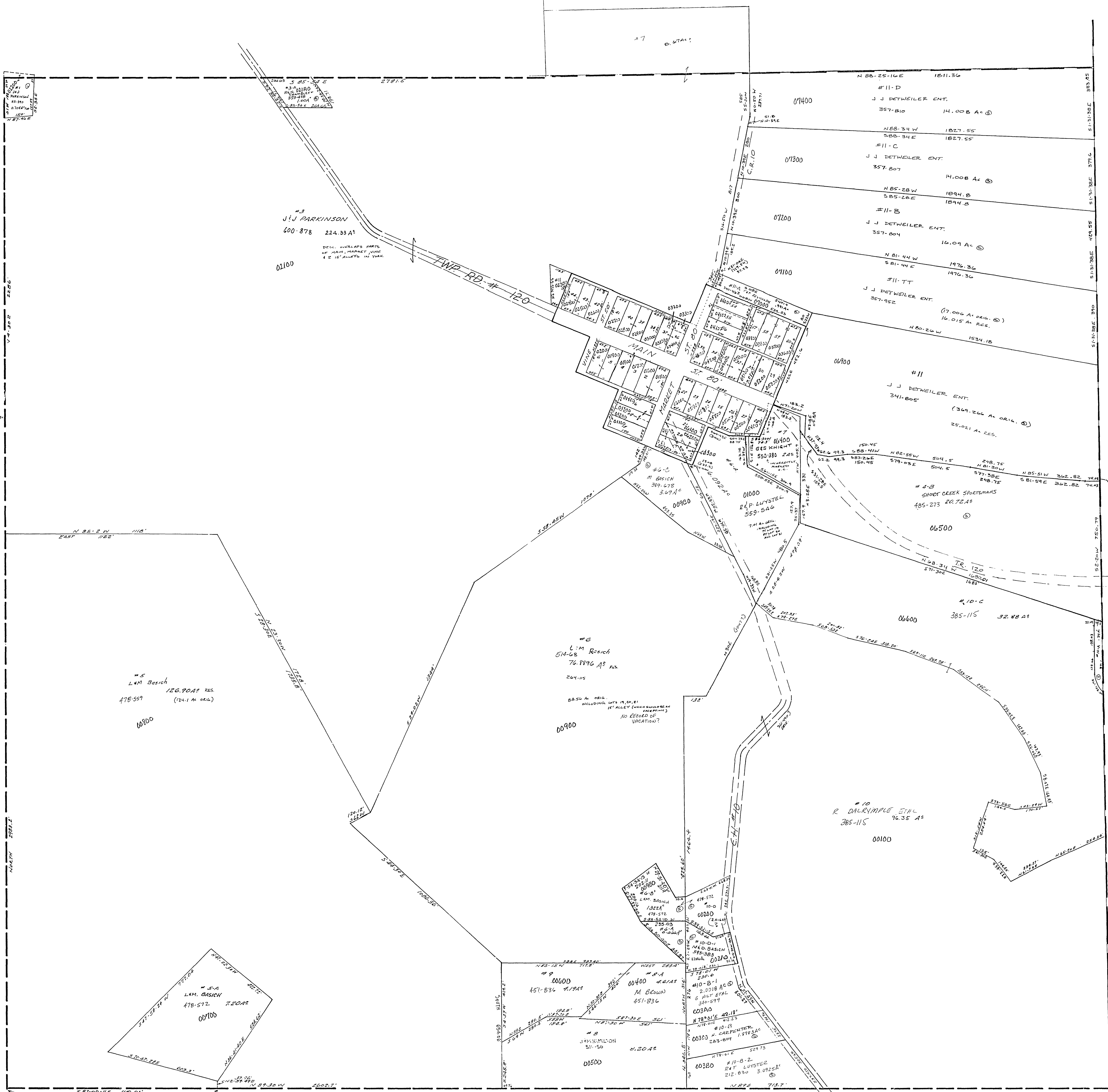


30-3400-

YORK

1	C. J. REYNOLDS	319-945	61.17 X 180
2	"	"	61.17 X 180
3	W. CROTHERS	164-25	69.17 X 180
4	D. BEZAK	650-831	61.17 X 180
5	D. BEZAK	650-831	61.17 X 180
6	K. D. DOWDELL	7-89	61.17 X 180
7	T. ABISHIE	315-028	61.17 X 180
8	"	"	61.17 X 180
9	"	"	61.17 X 180
10	"	"	61.17 X 180
11	"	"	61.17 X 180
12	"	"	61.17 X 180
13	"	"	61.17 X 180
14	"	"	61.17 X 180
15	"	"	61.17 X 180
16	"	"	61.17 X 180
17	"	"	61.17 X 180
18	"	"	61.17 X 180
19	"	"	61.17 X 180
20	"	"	61.17 X 180
21	"	"	61.17 X 180
22	"	"	61.17 X 180
23	"	"	61.17 X 180
24	"	"	61.17 X 180
25	"	"	61.17 X 180
26	"	"	61.17 X 180
27	"	"	61.17 X 180
28	"	"	61.17 X 180
29	"	"	61.17 X 180
30	"	"	61.17 X 180
31	"	"	61.17 X 180
32	"	"	61.17 X 180
33	"	"	61.17 X 180
34	"	"	61.17 X 180
35	"	"	61.17 X 180
36	"	"	61.17 X 180
37	"	"	61.17 X 180
38	"	"	61.17 X 180
39	"	"	61.17 X 180
40	"	"	61.17 X 180
41	"	"	61.17 X 180
42	"	"	61.17 X 180
43	"	"	61.17 X 180
44	"	"	61.17 X 180
45	"	"	61.17 X 180
46	"	"	61.17 X 180
47	"	"	61.17 X 180
48	"	"	61.17 X 180
49	"	"	61.17 X 180
50	"	"	61.17 X 180
51	"	"	61.17 X 180
52	"	"	61.17 X 180
53	"	"	61.17 X 180
54	"	"	61.17 X 180
55	"	"	61.17 X 180
56	"	"	61.17 X 180
57	"	"	61.17 X 180
58	"	"	61.17 X 180
59	"	"	61.17 X 180
60	"	"	61.17 X 180
61	"	"	61.17 X 180
62	"	"	61.17 X 180
63	"	"	61.17 X 180
64	"	"	61.17 X 180
65	"	"	61.17 X 180
66	"	"	61.17 X 180
67	"	"	61.17 X 180
68	"	"	61.17 X 180
69	"	"	61.17 X 180
70	"	"	61.17 X 180
71	"	"	61.17 X 180
72	"	"	61.17 X 180
73	"	"	61.17 X 180
74	"	"	61.17 X 180
75	"	"	61.17 X 180
76	"	"	61.17 X 180
77	"	"	61.17 X 180
78	"	"	61.17 X 180
79	"	"	61.17 X 180
80	"	"	61.17 X 180
81	"	"	61.17 X 180
82	"	"	61.17 X 180
83	"	"	61.17 X 180
84	"	"	61.17 X 180
85	"	"	61.17 X 180
86	"	"	61.17 X 180
87	"	"	61.17 X 180
88	"	"	61.17 X 180
89	"	"	61.17 X 180
90	"	"	61.17 X 180
91	"	"	61.17 X 180
92	"	"	61.17 X 180
93	"	"	61.17 X 180
94	"	"	61.17 X 180
95	"	"	61.17 X 180
96	"	"	61.17 X 180
97	"	"	61.17 X 180
98	"	"	61.17 X 180
99	"	"	61.17 X 180
100	"	"	61.17 X 180



SMITHFIELD TWP.
 SEC. 34, T. 8, R. 3.
 SCALE: 1" = 200'