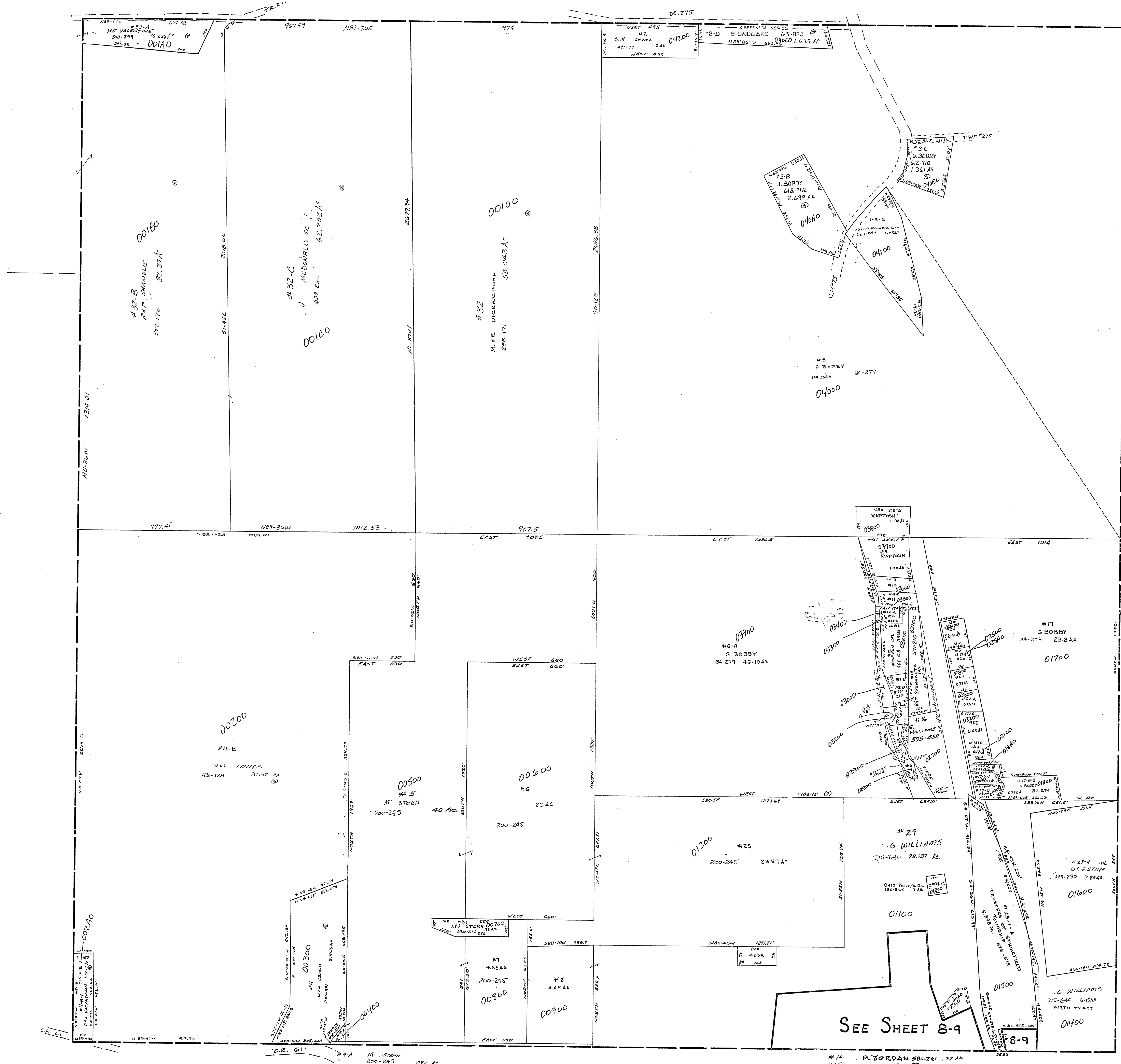


34-0700 -



#30	J. WEAVER	588-310	0.41 A ²
#17-A	DAT MATTA	185-883	0.21 A
#17-B	MID MATTA	518-53	0.23 A
#17-C	G. BOBBY	34-279	0.08 A
#29-B	H. G. GALLOWAY	577-609	.441
#29-P	H. G. GALLOWAY	577-609	.818
#19-20	J. STEBLE	122-540	0.29 A
#21	J. WEAVER	588-310	0.33 A
#22-A	G. BOBBY JR.	424-87	0.25 A
#22	J. W. ANDRUSKO	215-192	0.48 A
#17-B	G. BOBBY	34-277	0.25 A

#14	W. JORDAN	201-741	.32 A
#15	"	201-741	.10 A
#10	A. M. BIDDYAN		.40 A
#11	1st CAMP	552-938	.10 A
#27-B			0.441 A ²
#29-P	G. SLATES	155-324	0.340 A ²
#12-A	TR. OF THE EAST CANYON OF THE NARAGANSETT	309-305	0.109 A ²
#12-B	Graham's Pt. Stop	570-20	0.513 A ²
#13		100-321	.165 A ²
#24-M	G. R. MERRITT	580-177	
#24-P	D. A. MURPHY	583-985	B. 90
#29-P	G. SLATES	406-401	0.3402 A

SPRINGFIELD TWP.
SEC. 7, T. 12, R. 4.
SCALE: 1"=200'