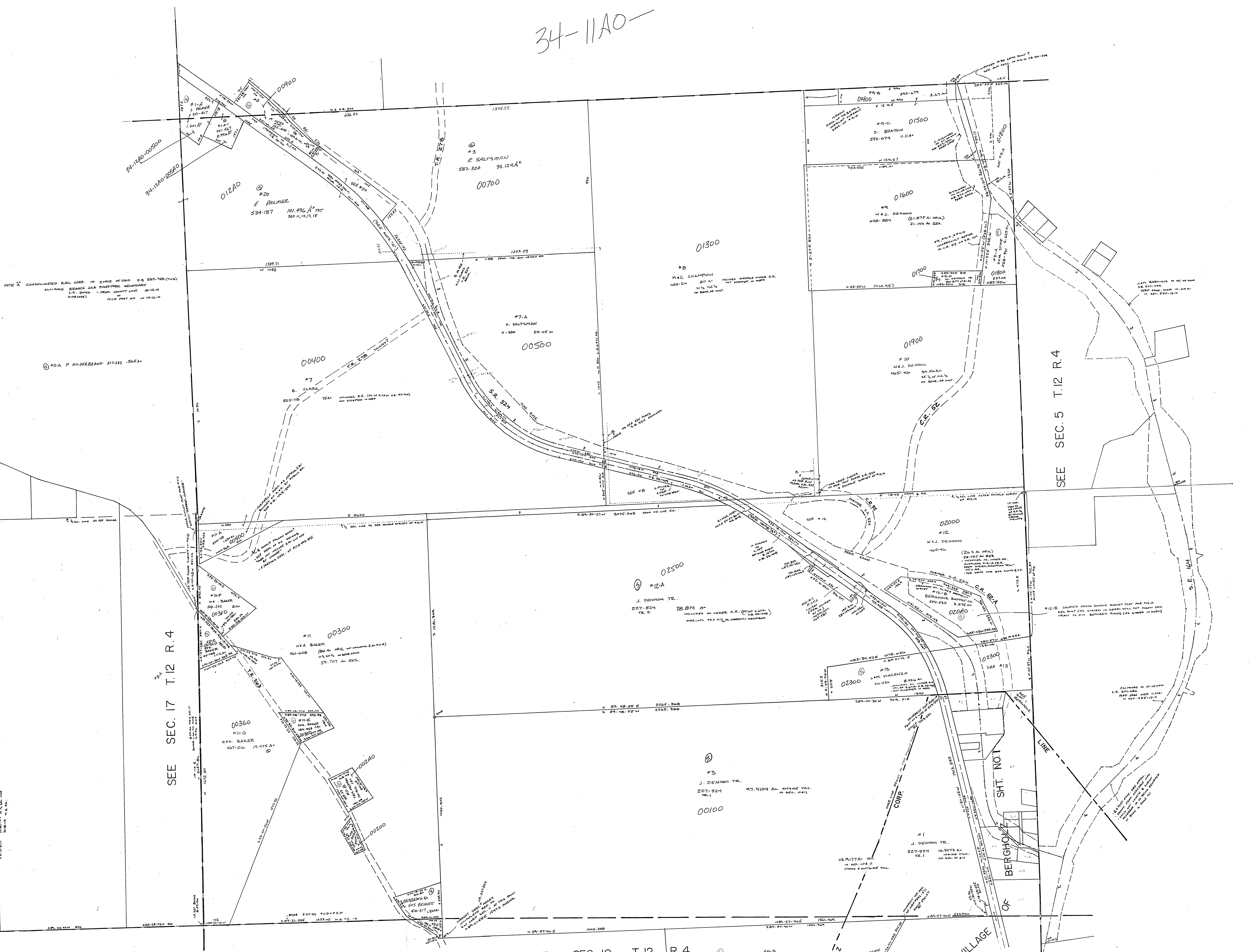


34-11A0-



NOTE: CONSOLIDATED RAIL CORP. TO STATE HIGHWAY DISTRICT (CIVIL) ALLIANCE BEARING AREA THEODORE BOUNDARY L.S. 2016 - FROM COUNTY LINE 10-12-14 (MILEAGE) MILE POST 64 IN 14-12-14

#1-A P. HILDEBRAND 377-333 .505A-

SEE SEC. 17 T.12 R.4

SEE SEC. 5 T.12 R.4

SEE SEC. 10 T.12 R.4

BERGHOF VILLAGE OF