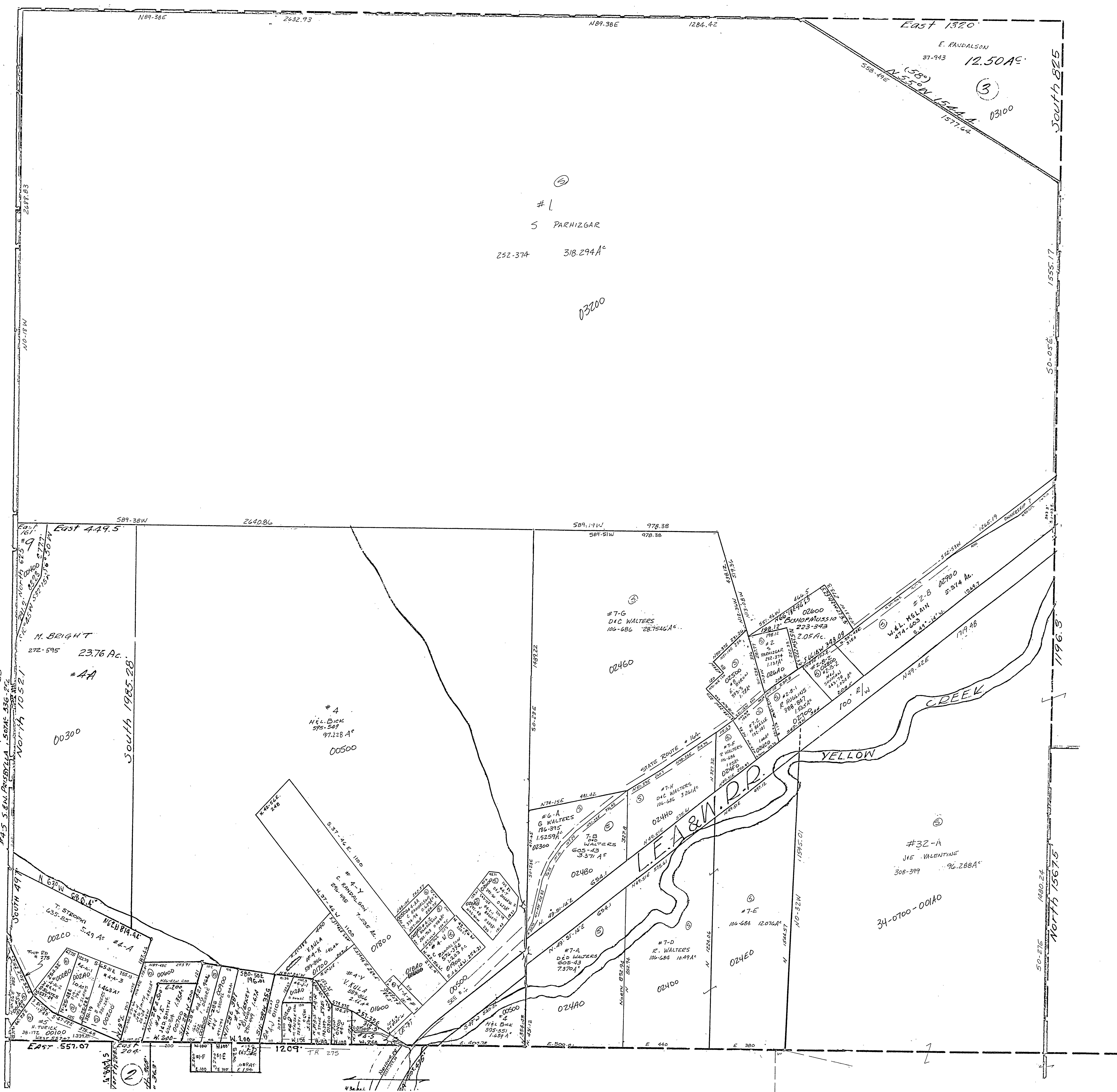


34-1400-



- #9 C. GREGOR 30-415 1.35A^c
- #4-J RAE VINCENZO 580-681 0.727A^c
- #4-J-1 M. TACZAK ET AL 349-994 0.366A^c
- #4-Y-1 JAC. BERDUELL 478-494 0.30A^c

- #5-A P. & L. TEICHMAN OSIBA 458-932
- #5 C.M. KOVALESKY 928-284 1.612A^c
- #4-C J. KRISBYLLA 277-919 0.39A^c
- #4-5

SPRINGFIELD TWP
 SEC. 14, T. 12, R. 4.
 SCALE: 1" = 200'