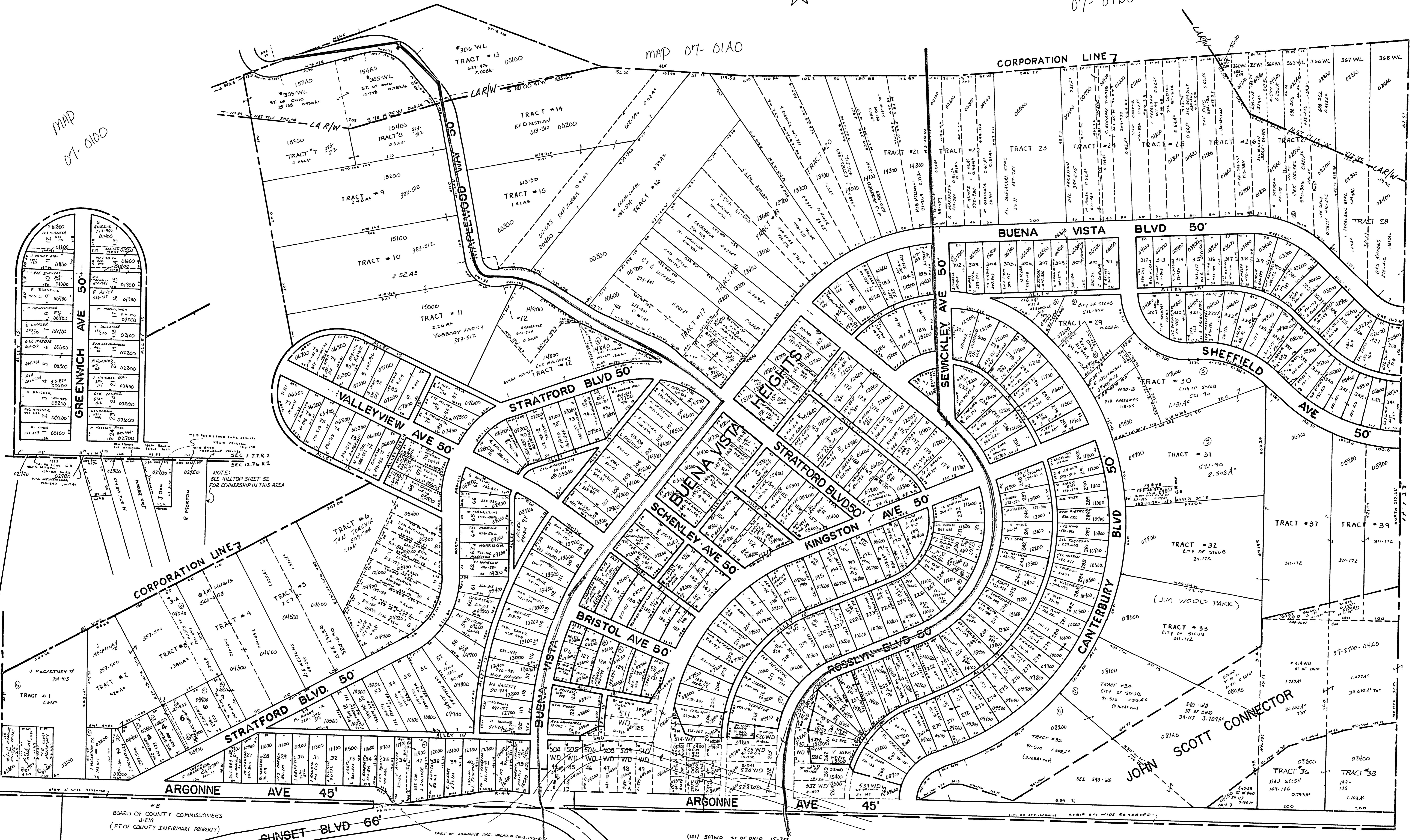


MAP
07-01B0

MAP
07-01A0

MAP 07-01A0



1	15300	15300	15300
2	15300	15300	15300
3	15300	15300	15300
4	15300	15300	15300
5	15300	15300	15300
6	15300	15300	15300
7	15300	15300	15300
8	15300	15300	15300
9	15300	15300	15300
10	15300	15300	15300
11	15300	15300	15300
12	15300	15300	15300
13	15300	15300	15300
14	15300	15300	15300
15	15300	15300	15300
16	15300	15300	15300
17	15300	15300	15300
18	15300	15300	15300
19	15300	15300	15300
20	15300	15300	15300
21	15300	15300	15300
22	15300	15300	15300
23	15300	15300	15300
24	15300	15300	15300
25	15300	15300	15300
26	15300	15300	15300
27	15300	15300	15300
28	15300	15300	15300
29	15300	15300	15300
30	15300	15300	15300
31	15300	15300	15300
32	15300	15300	15300
33	15300	15300	15300
34	15300	15300	15300
35	15300	15300	15300
36	15300	15300	15300
37	15300	15300	15300
38	15300	15300	15300
39	15300	15300	15300

NOTE: SEE HILTOP SHEET 32 FOR OWNERSHIP IN THIS AREA

BOARD OF COUNTY COMMISSIONERS
J-231
(PT OF COUNTY INFIRMARY PROPERTY)

NEIGHBORHOOD NO. OF TRACTS 22*3 BUENA VISTA HTS
37 LOT 2 WAC NEARBY 80-172 8.641130
37 LOT 3 WAC NEARBY 80-092 1.304150

PART OF ARGONNE AVE. UNLINED CO. 150-500
PARTS ADDED TO LOTS 34-42 BUENA VISTA HTS. ON THIS RECORD
SHOULD THEY HAVE SEPARATE PLOTS ON THIS RECORD
REVISOR: R.D. PLUM PT. 100-1000
COURT RECORDS FOR LOTS 34-42, 35-41 IN THIS PLAT
IDENTIFY THE PARTS OF UNLINED ROAD

(121) 501WD ST OF OHIO 15-731
(131) 512WD " " 15-731
PT 116 OHIO VALLEY GAS CO 375-411 10X35
343 DEE PALMER 310-217 60X150