

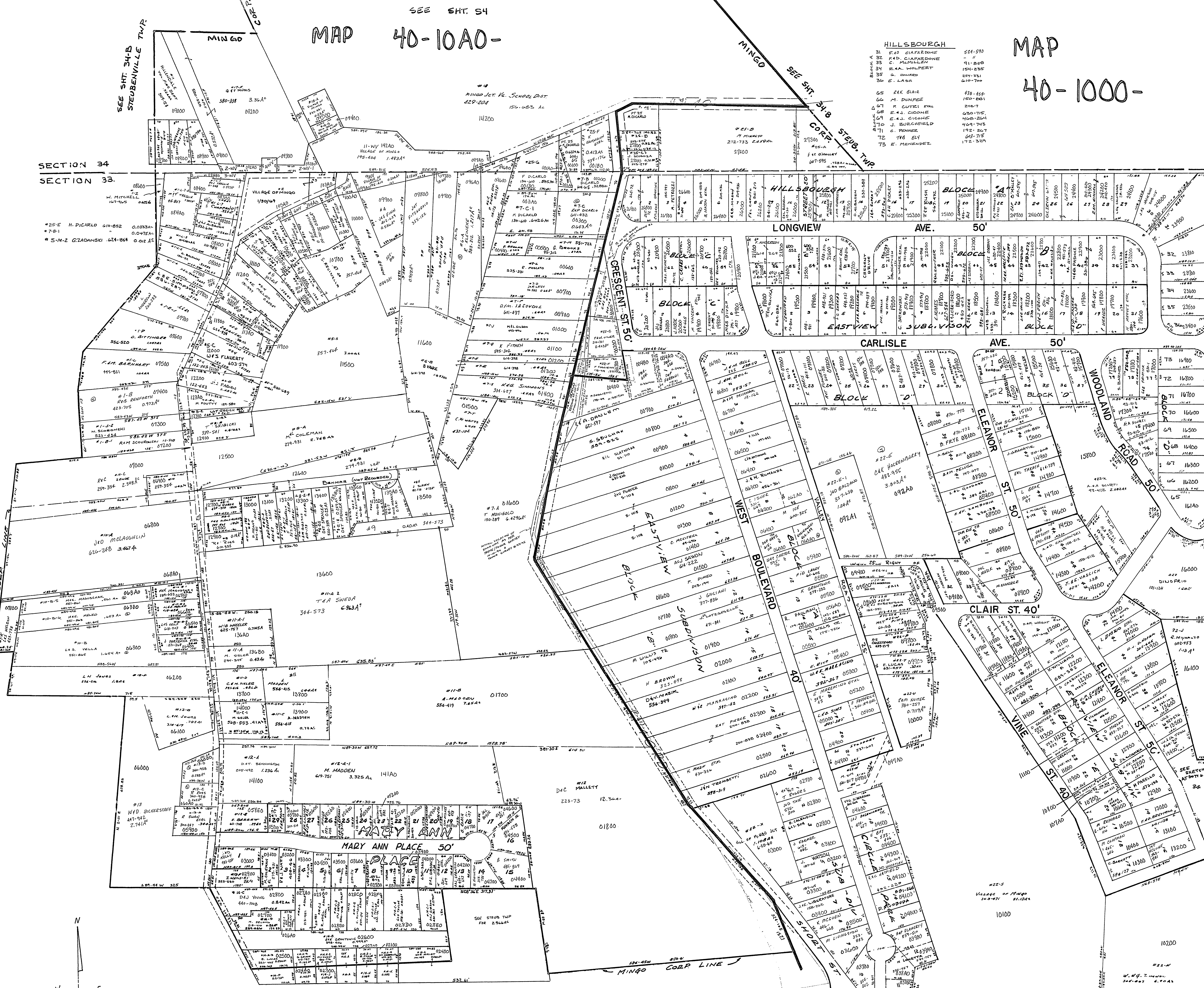
# MAP 40-10A0-

# MAP 40-1000-

**HILLSBOURGH**

|         |                |         |
|---------|----------------|---------|
| Block A | F. D. GIARDONE | 524-590 |
| 32      | F. D. GIARDONE | -       |
| 33      | E. MEMLEN      | 91-858  |
| 34      | E. A. WOLPERT  | 154-255 |
| 35      | A. HANDED      | 227-751 |
| 36      | E. LASH        | 610-726 |
| 65      | R. K. BLAIR    | 438-454 |
| 66      | M. DUNFEE      | 150-881 |
| 67      | F. CUTER       | 238-77  |
| 68      | E. A. CIGONE   | 420-715 |
| 69      | E. A. CIGONE   | 408-224 |
| 70      | J. BURCHFIELD  | 409-745 |
| 71      | C. PENNER      | 192-267 |
| 72      | T. B. ELY      | 683-718 |
| 73      | E. MENENDEZ    | 172-329 |

SEE SHT. 54  
MINGO LET. V. SCHOOL DIST.  
429-201 154.655 A.



|         |                  |         |        |
|---------|------------------|---------|--------|
| #22-K   | B. KEARNEY       | 597-866 | 0.190A |
| #1-K-1  | F. ZENDE         | 504-228 | 1.023A |
| #10-A-1 | D. SHIPLEY       | 285-645 | 0.102A |
| 2-WV    | VILLAGE OF MINGO | 195-395 | 0.106A |
| 2-WV-1  | "                | 195-396 | 0.111A |
| 3-WV    | "                | 207-257 | 0.096A |
| 5-WV    | "                | 195-416 | 0.026A |
| 6-WV    | "                | 195-430 | 0.039A |
| 7-WV    | "                | 195-419 | 0.035A |
| 8-WV    | "                | 195-407 | 0.043A |
| 12-WV   | "                | 195-422 | 0.042A |
| 13-WV   | "                | 195-413 | 0.002A |
| 4-WV    | "                | 217-888 | 0.057A |

CANNOT LOCATE  
#14-B E. K. GENTONIC 369.677 0.999A

MINGO  
SEC. 33, 34, T. 2 R. 1.  
SCALE: 1" = 100'