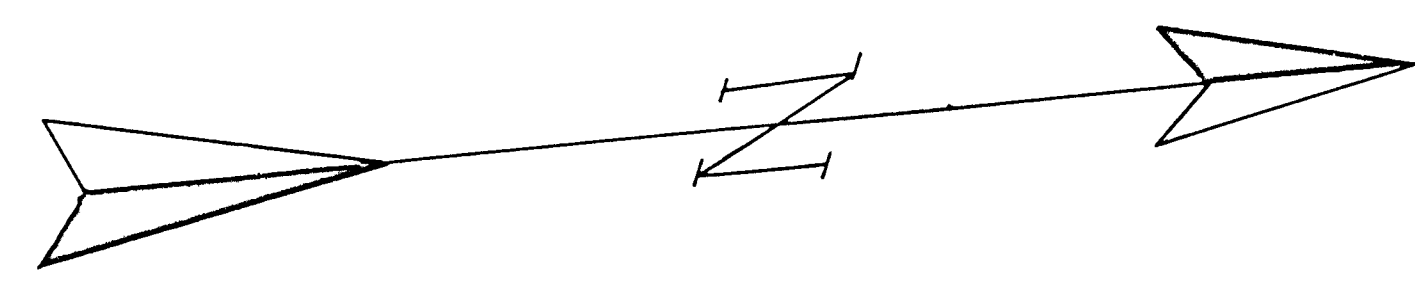


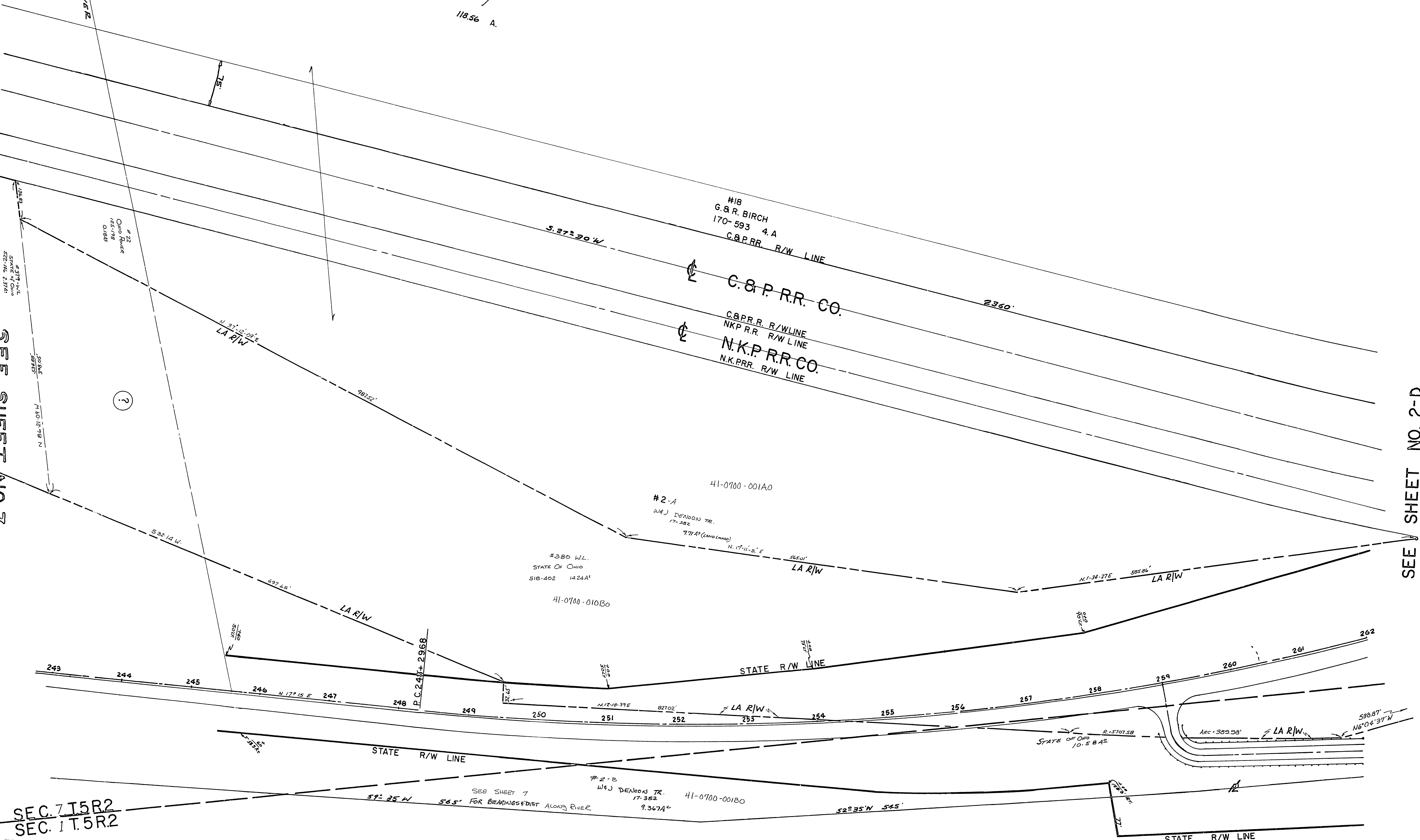
N 89° 46' W 3277.5' FROM RIVER  
M. 68 S 3270.2'



# 2  
SEE SHEET 7  
118.56 A.

SEE SHEET NO. 7

SEE SHEET NO. 2-D



SEC. 7 T. 5 R. 2  
SEC. 1 T. 5 R. 2

OHIO RIVER

WARREN TWP  
PTS. SEC'S. 2, 8, T. 5, R. 2.  
SCALE: 1" = 50'

476  
2-C