

42-0300-

SEE SHEET #1

Fig 256 Pg 594
New Depositions
14, 95A

N 88° W 768.6

U.S. OF AMERICA
42-275 10.55-A
See Sheet 4

6 HELMS ETAL
35-336 26.90A

RIVER

Sec. 18, T. 4, R. 2.

LOT NO	OWNER	AREA	REMARKS
26	L & A M HOLMES	0.10A	170-189
73	D. STOPKA	0.10A	511-115
75	H. ZEOME	0.05A	275-301
76	D. STOPKA	0.05A	300-303
77	B I S NURSH	0.04A	80-580
80	H & F BOCKOSKI	0.10A	353-794
81	"	0.10A	"
83	DEK OLEMARK	0.22A	513-213
84	ARNOLD & EVADILLON	0.21A	191-361
85	M. LOGGINS	0.11A	169-232
86	H & A STERLING	0.12A	201-410

#110-A	E.B. SHAFER	0.04A	425-741
#115	E. DAILEY	0.09A	512-212
#116	M.C. PASCO	0.08A	208-479
#117	G.M. HOLLIDAY	0.07A	545-553
#118	L.P. BRINDLEY	0.07A	508-211
#119	B. ELLIS	0.05A	180-022

#115	Josephine Stringer	0.11A	145-265
#117-A	S. WATT	0.06A	364-461
#117	D.J. DAVISSON	0.07A	484-364

SEC. 17, T. 4, R. 2.

#122	J.M. COSS	0.07A	353-404
#121	M.T. SMITH	0.097A	16-753
#120-A	B. DELVECCHIO	0.071A	73-434
#120-A	W. BERNHART	0.044A	097-151
#123	M. MANHARA	0.08A	403-675
#124	L. CANBER	0.07A	557-414
#127	TRAVIS	0.09A	445-479
#130	F. TOLLAND		473-403
#131	J.M. HAMILTON	0.07A	468-461
#131	B. BERRY	0.13A	267-402
#132	B. TRAVIS	0.05A	419-291
#132A	E.P. LOVELL	0.8A	130-278
#121	D. NEDVED	0.08A	620-435
#121-A	R. R. ECK	0.073A	116-324
#125-A	R. MOTT & T. MORELLI	223-104	0.046A

#125	R. MOTT & T. MORELLI	223-104	27X75
#125	J.B. MOORE		0.06A
#126	D.T. DIMMICK	486-264	0.086A
#126	STATE OF OHIO	12A	432-72
#126	STATE OF OHIO	1.71A	475-260
#126-A	W.B. HOP	1.04A	684-5

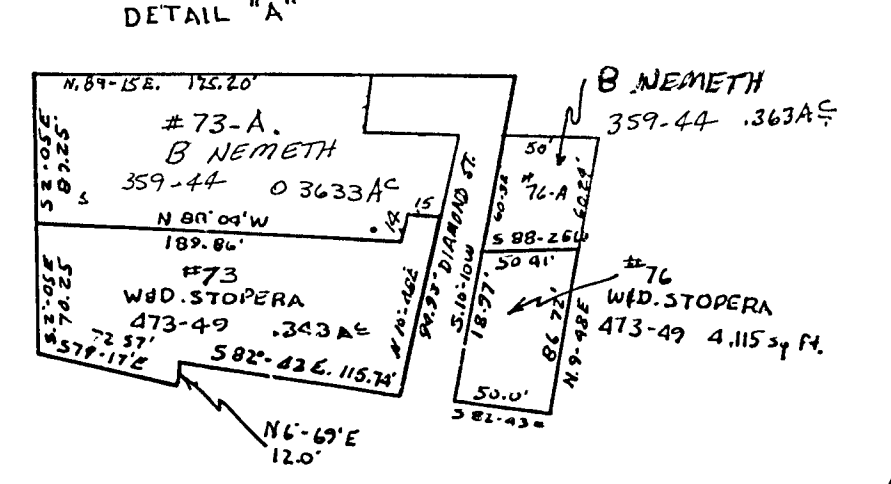
#137	E.M. WALDMAN	0.17A	558-71
#137-J	B. GODWARD	0.125A	281-1
#138	B. DELVECCHIO	73-672	0.076A
#138-A	F. GARDNER	87-939	0.082A
#138-A	H.P. STERSE	94-797	0.002A

VILLAGE OF RAYLAND
WARREN TWP.
SEC. 11-12-17-18, T. 4, R. 2.

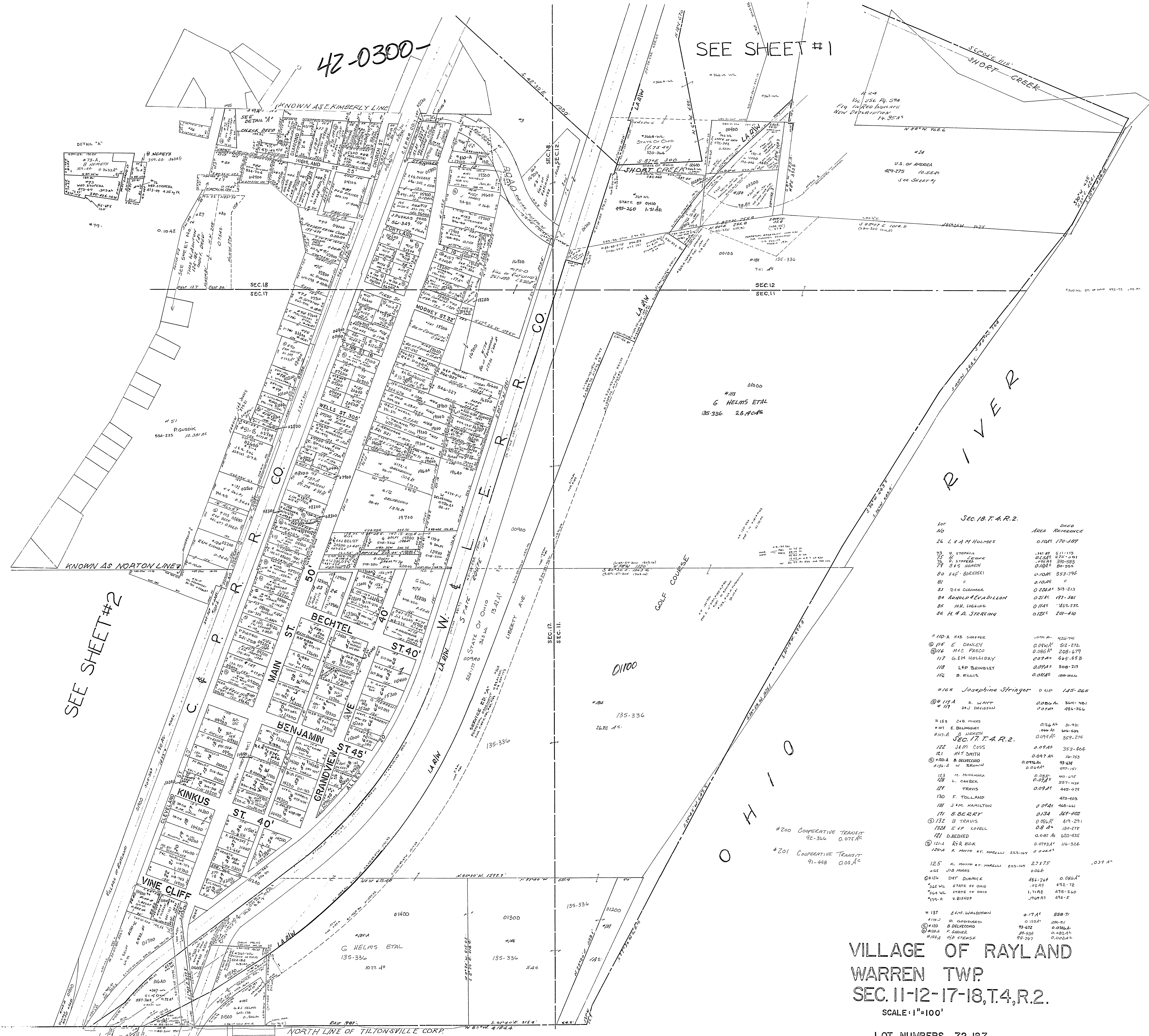
SCALE: 1"=100'

LOT NUMBERS 72-187

3



SEE SHEET #2



607
3