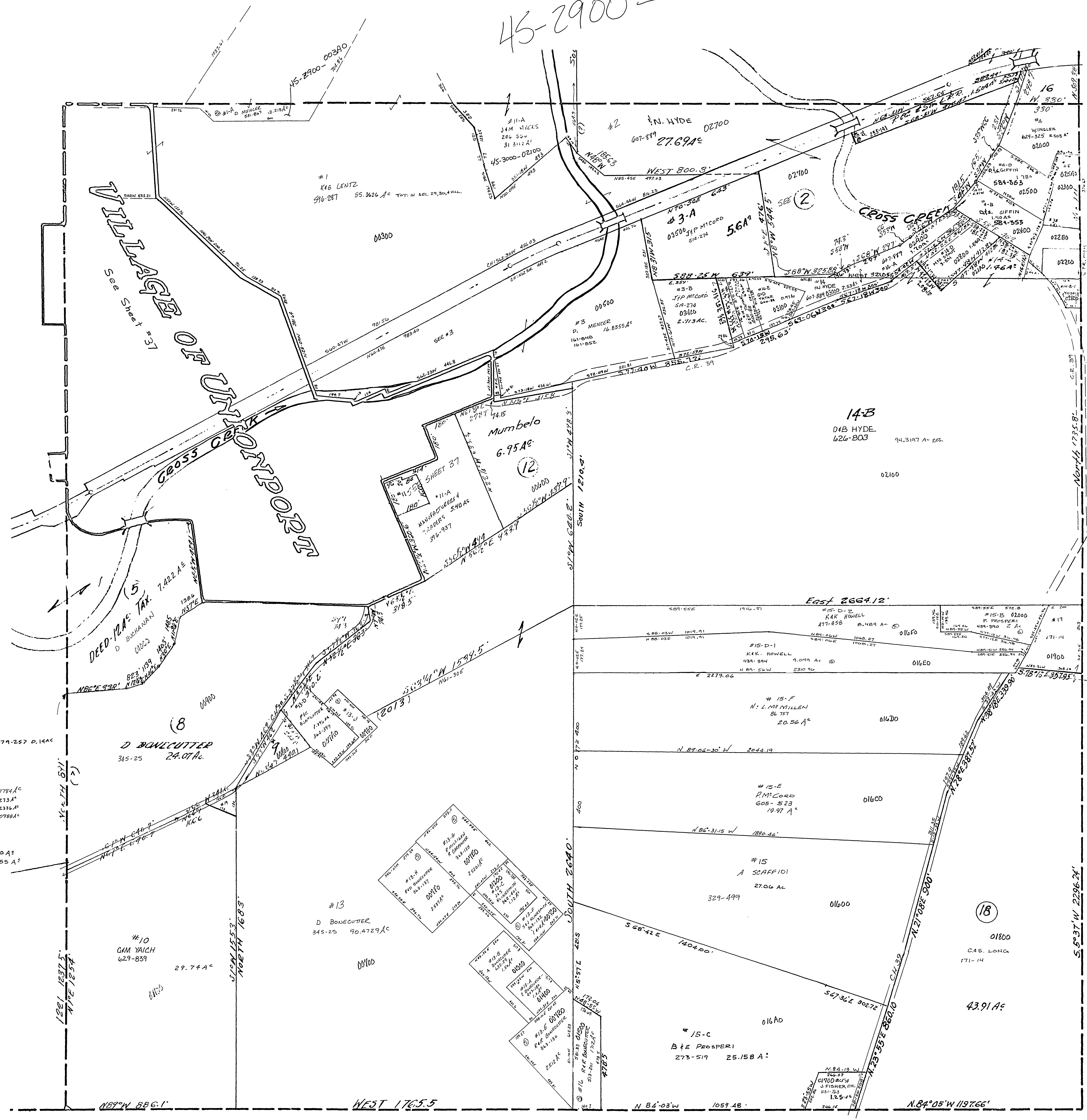
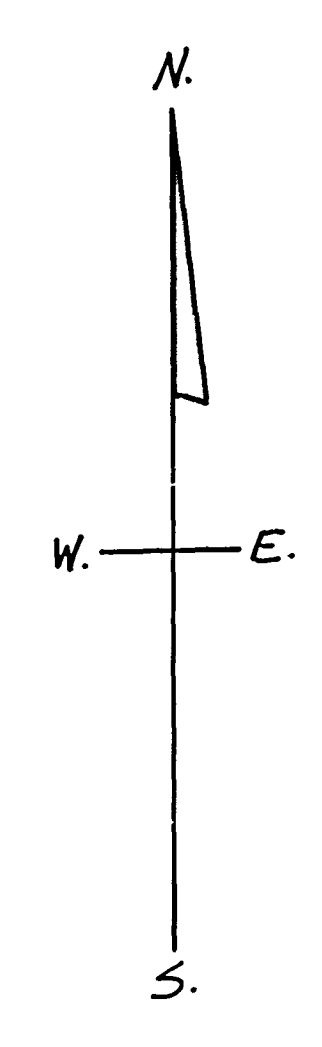


45-2900-



#2-D R.S. DAVIS 122-424-155A-E  
 #4-A J.M. WHIPKEY 591-32 (1.66 A.C.) 720A-A-00  
 #4-A-1 D.B. HYDE 414-276 (1.66 A.C.) ①  
 #4-A-2 W.G. HALEE 414-576 (1.66 A.C.) ①  
 #14-B-1 J.M. WHIPKEY 553-616 (1.03 A.C.) ①

3-9-29-35 #33 LAND R.I.C. DAVIS 574-257 2.14A  
 #13-J P.C. BANCUTTER 263-140 0.7794A  
 #9 K.E. HENNS 43-809 1.1213A  
 #19 59-547 0.2336A  
 #3-C G.B. MERVIN 110-576 0.0788A  
 #15-K B.E.BE & K.O'DRUMEN 551-675 0.90A  
 #3 E.E.GY 540-340 2.155A



WAYNE TWP.  
 SEC. 29, T.9, R.3.  
 SCALE: 1"=200'