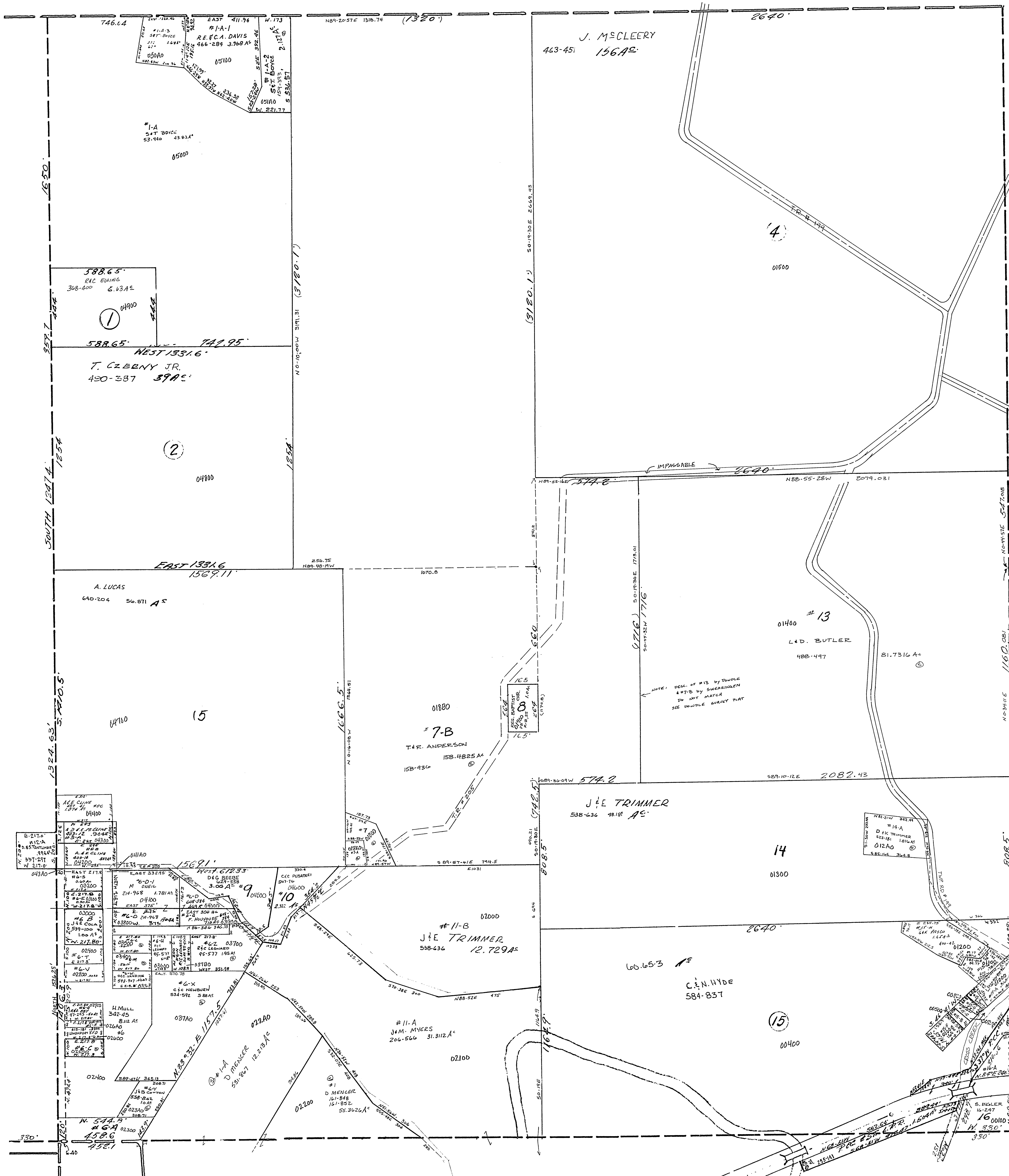


45-3000-



#6-C UNIFORMED VOLUNTEER FIRE & RESCUE INC.	779-256	0.50 AC	⊙
#6-B J&E COLA	539-100	1.00 AC	⊙
#6-T C/D VANDINE	5-330	0.30 AC	⊙
#6-V C/D VANDINE	5-330	0.30 AC	⊙
#6-A G. DENNE	609-230	1.38 AC	⊙
#6-L W.B. GRAHAM	609-569	0.5 AC	⊙
#6-M	"	"	⊙
#7-A CAC PUSATERI	42-956	0.3481 AC	⊙
#6-S H. AULT ET AL	35-130	0.60 AC	⊙
#6-E	"	0.50 AC	⊙
#6-H E.A. EBY	97-254	0.80 AC	⊙
#7 C.H. DYT	389-283	1.0 AC	⊙

#15-A	D.A.B. HYDE	693-686	0.840 AC
#15-E	"	"	0.162 AC
#15-B	L.D. EYE	388-984	0.216 AC
#15-C	"	"	0.111 AC
#15-D	"	"	0.198 AC
#15-F	"	"	0.493 AC
#15-G	A.N. HYDE	609-977	0.781 AC TOTL (EXCEPTED BY INSTRUMENTS 4, 1974)
#16-A	R.C.C. & ST. L. R.R.	257-45	0.75 AC

125  
30

WAYNE TWP.  
SEC. 30, T.9, R.3.  
SCALE: 1"=200'