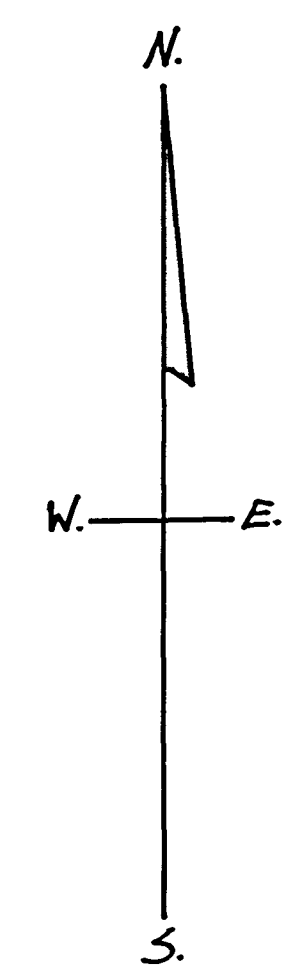
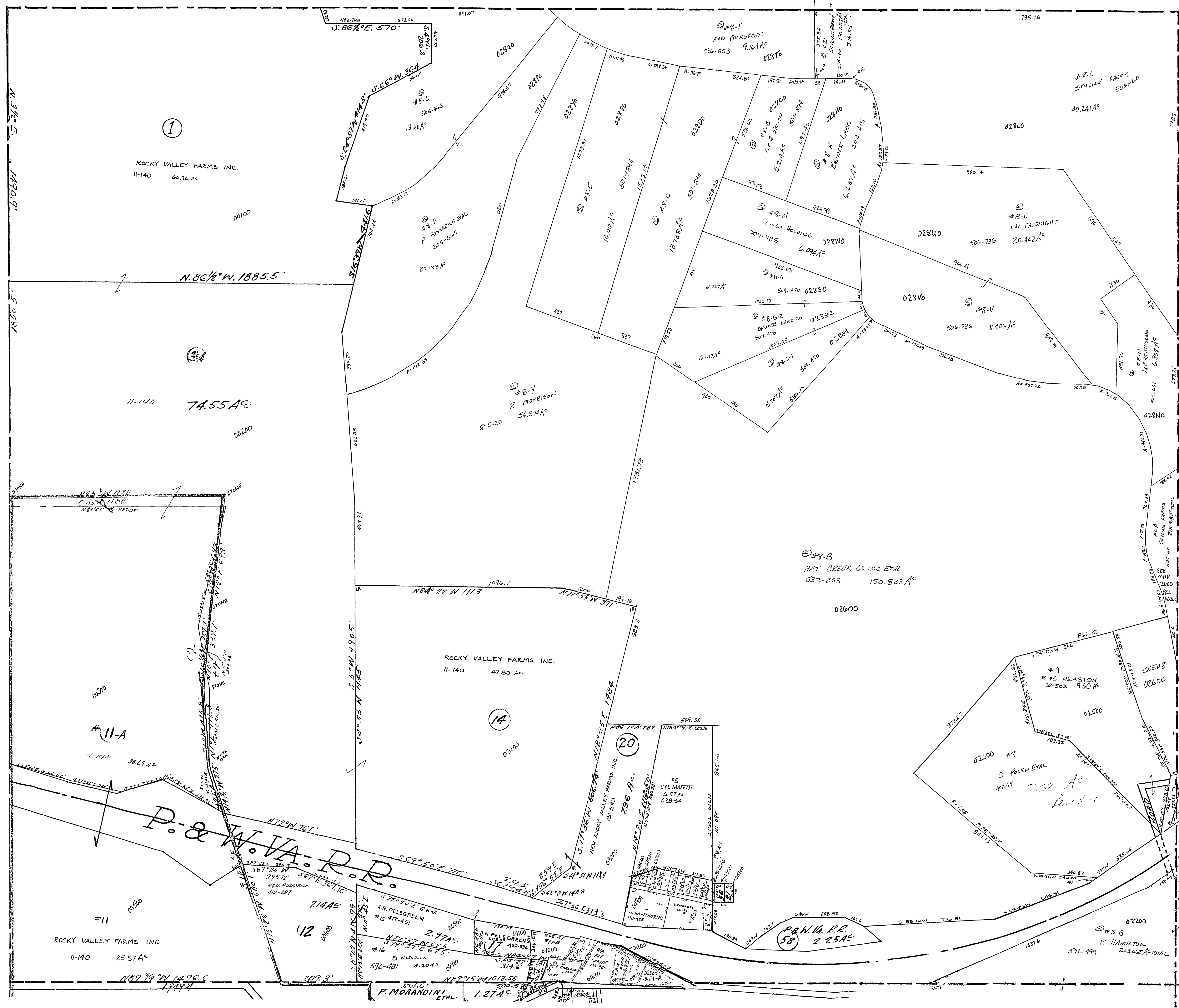


45-3200-



- #17-D M. KLINGSMITH 531-490 0.70 Ac
- #18-B MEL THOMAS 322-15 1.107 Ac
- #17-A M. KLINGSMITH 64-856 0.29 Ac
- #18-A T. D. MILLER 523-852 0.27 Ac
- #18-B R. HAWTHORNE 650-107 0.24 Ac
- #19 L. K. MILLIGAN 504-249 0.11 Ac
- #21 L. K. MILLIGAN 504-249 0.11 Ac
- #19-A L. K. MILLIGAN 501-789 0.04 Ac
- #59 D. POLEN ETAL 112-892 0.39 Ac
- #19-A J. MARTIN ETAL 322-743 0.40 Ac

- BATES S.D.
- #1 J. HAWTHORNE 466-451 204.50
- #2 " " " 40.70
- #3 " " " 37X95
- #10 J. MILLIGAN 156-271 102X120
- #11 J. MILLIGAN 156-271 102X120
- #16 J. SACADIA 355-371 40X120
- #7 " " " 40X120
- #3 J. HAWTHORNE 136-725 83X240
- #8 R. MAFFITT 260-171 40X120
- #9 " " " 40X120

WAYNE TWP.
SEC. 32, T. 9, R. 3.
SCALE: 1"=200'