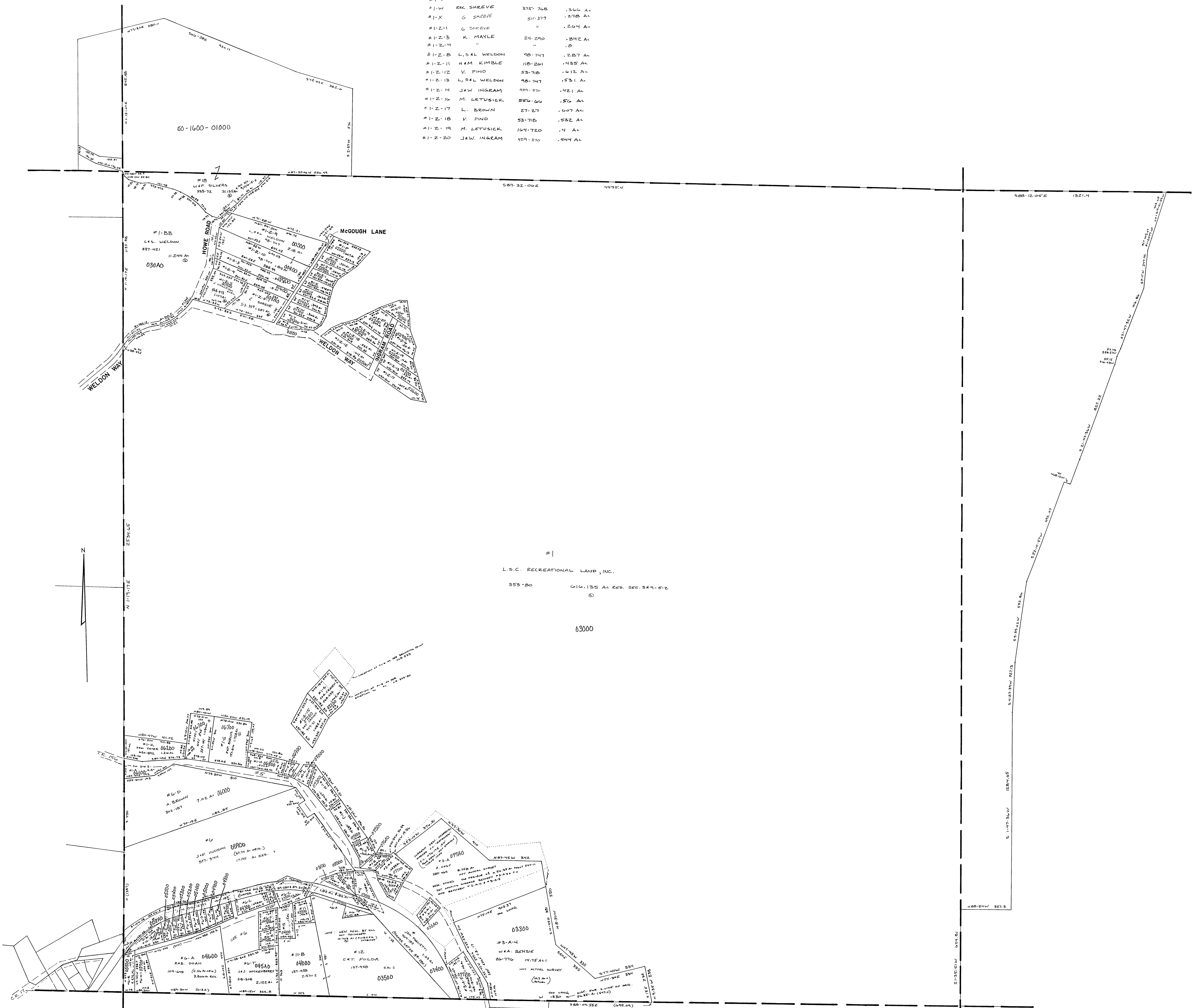


#1-P	L.S. WELDON	421-945	.607 Ac
#1-R	L.S. WELDON	48-747	.537 Ac
#1-T	D.P. MARTIN/K.A.S. DIGREGORIO	135-434	.431 Ac
#1-Z	"	"	.127 Ac
#1-U	T. WARD	624-874	.307 Ac
#1-V	"	"	.342 Ac
#1-W	R.K. SHREVE	375-768	.366 Ac
#1-X	G. SHREVE	511-377	.278 Ac
#1-Z-1	G. SHREVE	"	.264 Ac
#1-Z-3	K. MAYLE	24-290	.182 Ac
#1-Z-4	"	"	.18
#1-Z-B	L.S. WELDON	98-747	.287 Ac
#1-Z-11	H.M. KIMBLE	118-201	.435 Ac
#1-Z-12	V. PINDO	53-718	.412 Ac
#1-Z-13	L.S. WELDON	98-747	.531 Ac
#1-Z-14	J.W. INGRAM	489-570	.421 Ac
#1-Z-16	M. LETUSICK	570-66	.56 Ac
#1-Z-17	L. BROWN	27-27	.607 Ac
#1-Z-18	V. PINDO	53-718	.532 Ac
#1-Z-19	M. LETUSICK	161-720	.4 Ac
#1-Z-20	J.W. INGRAM	489-570	.544 Ac



#1-A	R.N. YATER	620-822 TK. 2	.9 Ac
#1-B	T. FAULKNER	399-269	.284 Ac
#1-C	T. FAULKNER	399-261	.362 Ac
#1-D	H. SCHWANKY	577-245	.624 Ac
#1-E	H. BROWN	242-728 TR. 1	.193 Ac
#1-H	H. BROWN	242-726	.574 Ac
#1-J	H. SCHWANKY	577-245	.683 Ac
#1-L	H. BROWN	242-728 TK. 2	.251 Ac
#5	SCHLAPPA DEVELOPMENT GROUP	227-222	.54 Ac
#5-A-1	E.R. HOLLIDAY	395-377	.31 Ac
#5-A-2	R. MILNER	527-901	.623 Ac
#5-A-3	J.A. MENDONOVIS	537-266	.325 Ac
#4	W. BENSIE	379-250	.608 Ac
#4-A	L.D. YOUNG	366-508 TR. 2	.193 Ac
#6-A-1	R.B. DRAN	609-720	.644 Ac
#6-B	R.E. MOORE	333-275	.45 Ac
#6-C	J. BROWN	237-66	.75 Ac
#6-E	J.J. COSS	225-872	1 Ac
#6-F	J.J. HOCKENBERRY	238-237	.358 Ac
#6-G	D. DUNN	629-784	.137 Ac
#6-H	J.N. LACROSS	260-417	.241 Ac
#6-J	S. BROWN	89-571	.25 Ac
#6-K	R.B. DOAN	472-46	.253 Ac
#6-L	C.P. LONG	296-3	.688 Ac
#6-M	J.P. HUDSON	317-341	.21 Ac
#6-N	"	"	.5 Ac
#6-P	R.K. MOORE	316-95	.216 Ac
#6-R	J.J. HOCKENBERRY	608-94	.336 Ac
#6-S	D.J. BROWN	630-673	.224 Ac
#6-W	M. LACROSS	370-281	.233 Ac
#6-X	L.D. YOUNG	366-508 TR. 1	.5 Ac
#11	J. BROWN	237-66	.46 Ac
#13	THE TRUSTEES OF THE FIRST E.W. METHODIST CHURCH	287-487	.5 Ac
#14-15	B. ELLIS	167-977	.43 Ac
#16	E. PFLUSH	613-818	.16 Ac
#16-A	"	"	.1145 Ac

50-0900-

WELLS TWP.  
SEC. 9 - T. 5 - R. 2

SCALE: 1" = 200'

8-14-00 496

